

Thermac Simulator

Operation Manual

1 Introduction
2 Basic Thermac Simulator Operation
3 Operations on the Tab Pages
4 Appendix
I Index

CONTENTS

Introduction

Overview	3
Features	3
IMPORTANT	4
Software License Agreement	4
Section 1. Definitions	4
Section 2. Permitted Uses	4
Section 3. Prohibited Uses	5
Section 4. No Warranty and Disclaimer	5
Section 5. Damage Limitation	5
Section 6. Intellectual Property Ownership Rights	6
Section 7. Modifying the Software	6
Section 8. Confidential Information	6
Section 9. Expiration and Termination of this Agreement	6
Section 10. Indemnification	6
Section 11. Miscellaneous	7
Section 12. Governing Law and Settlement of Disputes	7
Precautions for Safe Use	8
Precautions for Correct Use	8
Revision History	9
Related Manuals	10

Section 1 Introduction

1-1 Conditions for Use	1-1
1-2 Connecting to the Temperature Controller with a USB-Serial Conversion Cable.....	1-3

Section 2 Basic Thermac Simulator Operation

2-1 Part Names and Functions	2-1
2-2 Files	2-2
2-3 Basic Operations	2-3

Section 3 Operations on the Tab Pages

3-1 Settings Tab Page	3-1
3-1-1 Using a New Controller.....	3-2
3-1-2 Using a Previously Set Controller.....	3-3
3-1-3 Using a Log File from Another Company.....	3-3
3-2 Logging Tab Page	3-5
3-2-1 Collecting Log Data	3-6
3-2-2 Reading a Log File from Another Company	3-8

3-2-3	Adjusting the Graph Scales.....	3-9
3-3	Model Creation Tab Page.....	3-10
3-3-1	Creating the Model.....	3-11
3-3-2	Adjusting the Graph Scales.....	3-12
3-4	PID Simulation	3-13
3-4-1	Adjusting the PID Constants	3-14
3-4-2	Executing Autotuning (AT)	3-15
3-4-3	Adjusting the Rising Portion of the PV Waveform.....	3-16
3-4-4	Changing the Set Point	3-17
3-4-5	Comparing Waveforms during Adjustment	3-18
3-4-6	Checking Waveform Information.....	3-19
3-4-7	Adjusting the Graph Scales.....	3-19
3-4-8	Enlarging the PV Waveform.....	3-20
3-4-9	Changing Simulation Conditions	3-21
3-4-10	Writing the Simulation Results to the Temperature Controller.....	3-24

Section 4 Appendix

Phase Changes during Log Data Collection	4-1
--	-----

Index

Introduction

Overview

The Thermac Simulator is a software application that simulates temperature control for E5□C-series Temperature Controllers.

Features

Adjusting parameters for a Temperature Controller can require extensive time because the equipment has to be operated and the control results have to be checked. The Thermac Simulator, however, allows you to simulate equipment temperatures on a computer, so that adjustment results can be checked immediately without operating the equipment.

With just the Thermac Simulator, you can perform everything from parameter settings and log data collection through the actual simulations.

Functions are also provided to allow you to easily adjust the parameters, such as automatic optimal differential time (D) adjustment and simulation results comparison before and after adjustment.

IMPORTANT

By installing this Software, User is deemed to agree to be bound by the following Software License Agreement.

If User does not agree the following Software License Agreement, User cannot download and use Software and have to immediately stop installing or downloading Software.

Software License Agreement

This is a binding agreement between User and OMRON Corporation, a corporation organized and existing under the laws of Japan with its place of business at Shiokoji Horikawa, Shimogyo-ku, Kyoto, Japan (“OMRON”) on the terms and conditions to use Software.

Section 1. Definitions

“Software” means the computer program and related documentation for temperature controllers typed E5□C series contained in this package, including, without limitation, revision software, updates and other derivative works thereto.

“User” means a corporation, company, partnership and other entity for the use of which its employee, staff, member, agent or other third party downloads or obtains Software.

“Intellectual Property Rights” means any patent, copyright, trade secret, trademark or other intellectual property rights (including, without limitation, applications thereof) in any idea, design, concept, method, technique, invention, discovery, improvement, technical information, software (in whatsoever form or media) and related algorithms, flow charts, logic diagrams and specifications, mask works, graphics or other works of authorship.

“Affiliated Companies” means any company, corporation or entity that is controlled by a party and/or any company, corporation or entity that controls a party and/or any company, corporation or entity that is controlled by one of the before mentioned companies, corporations or entities. However, any such company, corporation or entity shall be deemed to be an Affiliated Companies only as long as control exists. For these purposes, a company, corporation or entity shall be treated as being controlled by another company, corporation or entity if that other company, corporation or entity has fifty percent (50%) or more of the votes in such entity, and/or is able to direct its affairs and/or to control the composition of its board of directors or equivalent body.

Section 2. Permitted Uses

Subject to the terms and conditions in this Agreement, OMRON grants User a non-exclusive, non-transferable and royalty-free license to use Software on computers owned by User for the purpose of simulating parameter for temperature controllers of OMRON or its Affiliated Company.

Section 3. Prohibited Uses

Without the prior written consent of OMRON, User shall not:

- (a) publish, disclose, market, sublicense, upload, rent, lease or distribute Software;
- (b) modify, translate, adapt, reverse engineer, de-compile or disassemble Software;
- (c) assign Software to a third party; or,
- (d) use, reproduce or otherwise utilize Software, in whole or in part, other than as expressly permitted by this Agreement.

Section 4. No Warranty and Disclaimer

OMRON LICENSES SOFTWARE TO USER "AS IS" BASIS WITH ALL FAULTS, AND WITHOUT WARRANTY OF ANY KIND. USER ACKNOWLEDGES AND AGREES THAT USER SHALL USE SOFTWARE SOLELY ON ITS OWN RESPONSIBILITY, AND AT ITS SOLE COST AND RISK. OMRON DOES NOT MAKE, AND HEREBY DISCLAIM, ANY EXPRESS OR IMPLIED WARRANTIES INCLUDING, BUT NOT LIMITED TO, TITLE AND NONINFRINGEMENT OF THIRD PARTY'S RIGHTS, THE WARRANTY OF DESIGN, ANY IMPLIED WARRANTY OF MERCHANTABILITY OR FITNESS FOR A PARTICULAR PURPOSE. OMRON DOES NOT WARRANT THAT SOFTWARE AND ITS OUTPUT WILL MEET USER'S REQUIREMENTS THAT ITS OPERATION WILL BE UNINTERRUPTED OR ERROR-FREE, THAT ITS DEFECTS WILL BE CORRECTED, OR THAT IT WILL BE COMPATIBLE WITH ANY OR FUTURE OMRON PRODUCTS. NO ORAL OR WRITTEN INFORMATION OR ADVICE GIVEN BY OMRON, ITS AFFILIATED COMPANIES OR ANY OF THEIR RESPECTIVE DIRECTORS, OFFICERS, EMPLOYEES OR AGENTS SHALL CREATE A WARRANTY OR IN ANY WAY INCREASE THE SCOPE OF OMRON'S OBLIGATIONS UNDER THIS AGREEMENT. USER HEREBY WAIVE ANY AND ALL CLAIMS THAT USER MAY HAVE AGAINST OMRON, ITS AFFILIATED COMPANIES OR ANY OF THEIR RESPECTIVE DIRECTORS, OFFICERS, EMPLOYEES OR AGENTS ARISING OUT OF SOFTWARE AND/OR THIS AGREEMENT.

Section 5. Damage Limitation

SOFTWARE IS PROVIDED AS A CONVENIENCE AND ACCOMMODATION TO USER. TO THE EXTENT NOT PROHIBITED BY LAW, IN NO EVENT SHALL OMRON, ITS AFFILIATED COMPANIES OR ANY OF THEIR RESPECTIVE DIRECTORS, OFFICERS, EMPLOYEES, OR AGENTS, BE LIABLE TO USER OR ANY THIRD PARTY FOR ANY CAUSE OR CLAIM WHATSOEVER, INCLUDING PERSONAL INJURY, OR ANY INCIDENTAL, SPECIAL, INDIRECT, CONSEQUENTIAL OR PUNITIVE DAMAGES WHATSOEVER, INCLUDING, WITHOUT LIMITATION, DAMAGES FOR LOSS OF PROFITS, LOSS OF DATA, BUSINESS INTERRUPTION OR ANY OTHER COMMERCIAL DAMAGES OR LOSSES, ARISING OUT OF OR RELATED TO THIS AGREEMENT OR THE SOFTWARE, ITS OUTPUT, SECURITY SOLUTION OR SERVICES, HOWEVER CAUSED, WHETHER UNDER A THEORY OF CONTRACT, WARRANTY, TORT, NEGLIGENCE, PRODUCT LIABILITY, OR OTHERWISE, EVEN IF OMRON HAS BEEN ADVISED OF THE POSSIBILITY OF SUCH DAMAGES, AND NOTWITHSTANDING THE FAILURE OF ESSENTIAL PURPOSE OF ANY REMEDY. IN ANY EVENT, THE MAXIMUM LIABILITY OF ANY OF THE FOREGOING PARTIES FOR ALL CLAIMS OF EVERY KIND (INCLUDING THOSE ARISING IN TORT) ARISING OUT OF THE SOFTWARE AND/OR THIS AGREEMENT SHALL NOT EXCEED FIFTY U.S. DOLLARS (US\$50.00).

Section 6. Intellectual Property Ownership Rights

Title and ownership of all Intellectual Property Rights in Software will at all times remain with OMRON or the third party who has licensed Software to OMRON, as the case may be. The rights granted to User by OMRON under such Intellectual Property Rights are only for the purposes set forth expressly in this Agreement. User shall not remove any copyright, patent, trade secret, proprietary and/or other legal notices contained on or in the Software, including any associated software, programming, or documentation. User shall not use any information or data disclosed by OMRON in connection with this Agreement to contest the validity of any Intellectual Property Rights of OMRON. Any such use of OMRON's information and data shall constitute a material, non-curable breach of this Agreement. User shall not use Software and any Confidential Information disclosed by OMRON to User in connection with this Agreement to contest the validity of any Intellectual Property Rights of OMRON, including Software. Any such use of OMRON's information and data shall constitute a material, non-curable breach of this Agreement.

Section 7. Modifying the Software

- (1) OMRON may extend, enhance, or otherwise modify Software at any time without notice, but OMRON has no obligation to provide User with any updates or changes.
- (2) OMRON has no obligation to provide any support or engineering assistance of any sort to User.

Section 8. Confidential Information

User shall treat any information contained in the Software ("Confidential Information") as confidential and shall not disclose it to any third party. This obligation shall survive after the termination of this Agreement.

Section 9. Expiration and Termination of this Agreement

This Agreement shall come into effect on the day first above written and remain valid for one (1) year thereafter. Unless either party notifies the other party of its intention not to renew this Agreement at least thirty (30) days prior to the expiration of then current term, this Agreement shall be automatically renewed and remain valid for a successive period of one (1) year thereafter each. If User breaches this Agreement, OMRON may terminate this Agreement upon notice to User. When this Agreement is expired or terminated, User shall promptly return or destroy the Software, Confidential Information and all copies thereof. The rights and obligations under Section 4, 5, 6, 8, 9, 10, 11 and 12 shall survive expiration or termination of this Agreement and bind the parties and their legal representatives, successors and assigns thereafter.

Section 10. Indemnification

User agrees to indemnify, defend and hold harmless OMRON, its Affiliated Companies and any of their directors, officers, employees or agents (collectively, the "OMRON Indemnitees") from actual or alleged claims, losses, liabilities, damages, expenses and costs, including reasonable attorneys fees and expert costs, incurred by any OMRON Indemnitees as a result of (a) a breach of this Agreement by User, (b) User's violation of applicable law, or (c) the negligence or other wrongful conduct of User.

Section 11. Miscellaneous

Neither this Agreement nor any part or portion hereof shall be assigned, sub-licensed or otherwise transferred by User. OMRON may assign this Agreement, without the User's consent, to any Affiliated Companies or other third parties. Should any provision of this Agreement be held to be void, invalid, unenforceable or illegal by a court, the validity and enforceability of the other provisions of this Agreement shall not be affected thereby. Failure of a party to enforce any provision of this Agreement shall not constitute or be construed as a waiver of such provision or of the right to enforce such provision.

Section 12. Governing Law and Settlement of Disputes

The formation, validity, construction and the performance of this Agreement, and all amendments and supplements hereto, shall be governed and interpreted by and in accordance with the laws of Japan without reference to conflict of law rules. Any and all disputes, controversies or differences which may arise between the parties hereto out of or in relation to or in connection with this Agreement shall be finally and exclusively settled by the competent court of Kyoto, Japan.

(C) Copyright OMRON CORPORATION 2004-2014

All Rights Reserved

Precautions for Safe Use

- In addition to this manual, also refer to the Instruction Manual and User's Manual for the Temperature Controller.
- Check the destination Temperature Controller before you transfer the parameters to it.
- Occasionally there are large deviations in the simulation waveforms. When you perform actual temperature control, always implement measures to ensure safety for unexpected temperature increases.
- Do not set the project file (extension ".tcs") created with this tool to Read Only.
- Uninstall an old version before installing a newer version of this tool.

Precautions for Correct Use

- Use the Thermac Simulator only on the specified operating system. The Thermac Simulator may malfunction on other operating systems.
- Do not use the Thermac Simulator near motors, power lines, or other sources of electrical noise. Noise may enter on communications cables, possibly causing malfunctions.
- Do not run any other software applications while you are using the Thermac Simulator. Doing so may cause log data sampling to be skipped during communications with the Temperature Controller or other communications errors may occur.

Revision History

A manual revision code appears as a suffix to the catalog number on the front cover of the manual.

Cat. No.	H190-E1-02
----------	-------------------

↑
Revision code

Revision code	Date	Revised content
01	July 2014	Original production
02	July 2019	Supports Windows 10 (Version 1.10).

Related Manuals

Refer to the *E5□C Digital Temperature Controller User's Manual* (Cat. No. H174) for information on the Temperature Controller and to the Instruction Manual that comes with the Temperature Controller for information on the USB-Serial Conversion Cable.

Using Thermac Simulator Version 1.10

This tool requires Microsoft .NET Framework 3.5 SP1 to run the program.
If NET Framework 3.5 SP1 is not installed on your computer, install it manually.

Installing .NET Framework 3.5 SP1

.NET Framework 3.5 SP1 is installed standard on Windows 7 computers. Perform steps 2 to 4 below.
.NET Framework 3.5 SP1 is not installed standard on Windows 8.1 or Windows 10 computers.
To use on a Windows 8.1 or Windows 10 computer, install .NET Framework 3.5 SP1 as indicated in step 1 below, and perform steps 2 to 4.

1 Install .NET Framework 3.5 SP1.

● Installing by connecting the computer to the network

- (1) Install with "dotnetfx35.exe" in the folder that appears when you decompress the zip file that you downloaded from the OMRON website.
- (2) Install the language pack with either of the following files in the folder that appears when you decompress the zip file that you downloaded from the OMRON website.
Japanese 32bit OS: "dotnetfx35langpack_x86ja.exe" in the "Japanese" folder.
Japanese 64 Bit OS: "dotnetfx35langpack_x64ja.exe" in the "Japanese" folder.

Chinese 32 bit OS: "dotnetfx35langpack_x86zh-CHS.exe" in the "Chinese" folder.

Chinese 64 bit OS: "dotnetfx35langpack_x64zh-CHS.exe" in the "Chinese" folder.

● Installing without connecting the computer to the network

This procedure shows how to install the Thermac Simulator (and attached software) on PCs (Windows 8.1 or Windows 10 OS) that cannot connect to the network.

What are required to prepare:

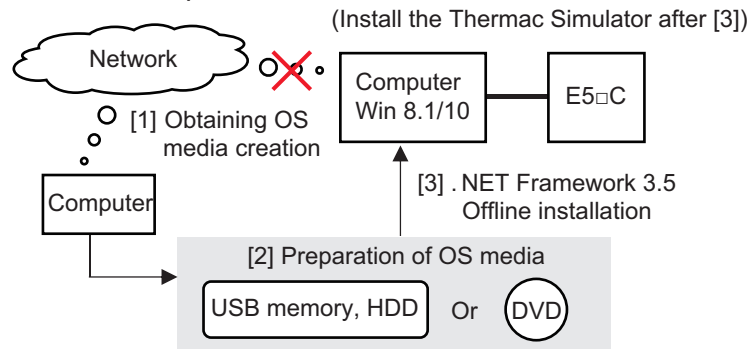
- Network connected computer
- Empty recording medium (USB memory of 8GB or more, HDD or DVD)

This procedure also details the resolution technique published on the following Microsoft official website.

Microsoft official website URL: [https://msdn.microsoft.com/en-US/library/windows/hardware/dn898529\(v=vs.85\).aspx#nointerent](https://msdn.microsoft.com/en-US/library/windows/hardware/dn898529(v=vs.85).aspx#nointerent)

Note In Windows version 8.1 or later OS version, the "Microsoft NET Framework 3.5" required for installing the Thermac Simulator is not installed in advance. Therefore, if you are using a computer with the above OS version and cannot connect to the network, you cannot acquire the above. NET and you cannot install the Thermac Simulator.

Outline of this procedure



(1) Acquire OS media creation tool

To create the OS media that matches the Windows version of the computer you want to install the software tool, download the OS media creation tool "MediaCreationTool.exe" from the official Microsoft page at the following URL.

Windows 8.1

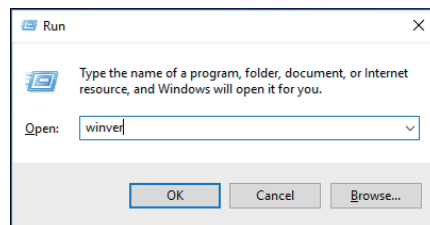
<https://www.microsoft.com/en-us/software-download/windows8>

Windows 10:

<https://www.microsoft.com/en-us/software-download/windows10>

Note If you do not know the Windows version of your computer, perform the following procedure.

- 1) Hold down the Windows key and press the R key.
Alternatively, click [Run] from the [Start] menu.
- 2) Enter "winver" and click [OK].Button.

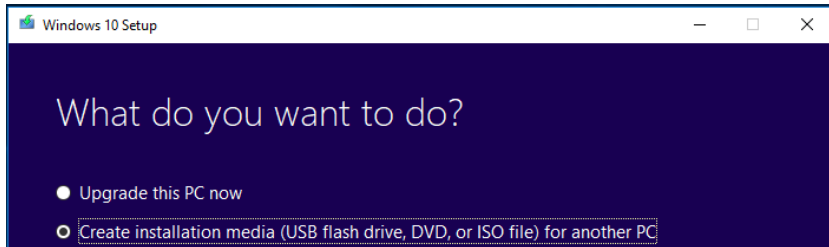


- 3) The Windows version is displayed, so confirm.

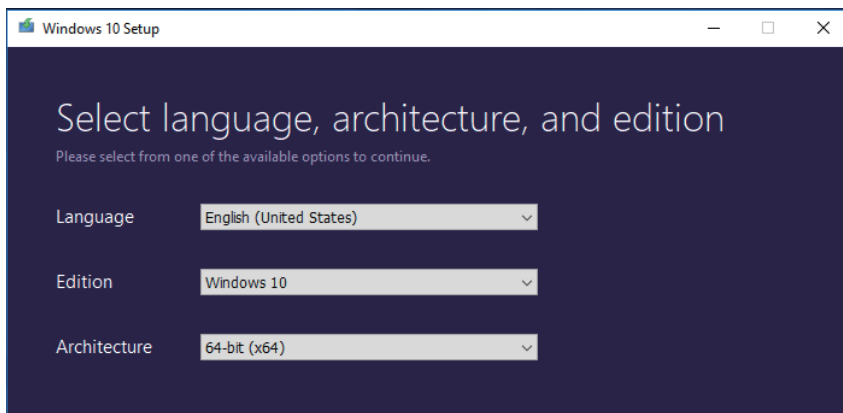
(2) OS media creation

Run the downloaded OS media creation tool.

Be sure to select "Create installation media of another PC" for the option after agreeing to the license terms.

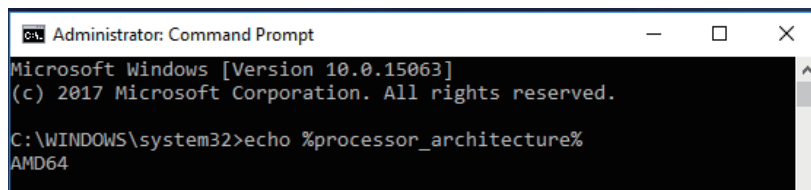


In the selection screen of language, architecture, and edition, uncheck the check box at the bottom and select the same one as the computer you want to install the Thermac Simulator.



Note If you do not know the architecture of your computer, perform the following procedure.

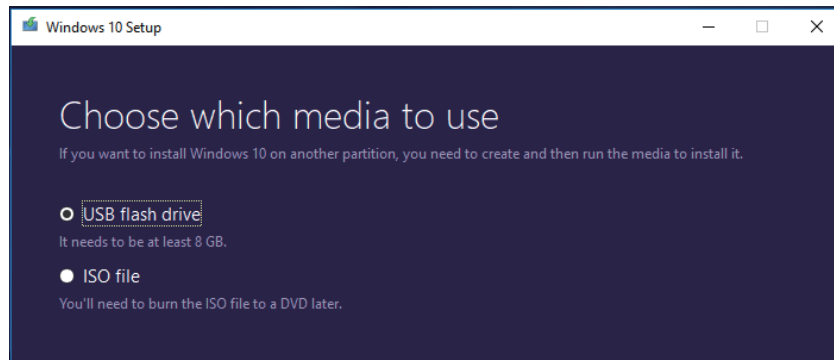
- 1) On the personal computer where you want to install the Thermac Simulator, hold down the Windows key and press the R key.
Alternatively, click [Run] from the [Start] menu.
- 2) Enter "cmd" and click OK. A command prompt is launched.
- 3) Enter "echo %processor_architecture%" and press Enter key.



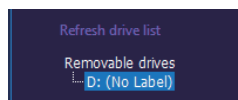
- 4) 32 bits are displayed as x86, 64 bits are displayed as x64, and so on.

Select the media type to use.

When selecting "USB flash drive", be sure to prepare an empty recording medium (USB memory of 8 GB or more, HDD or DVD) without data.



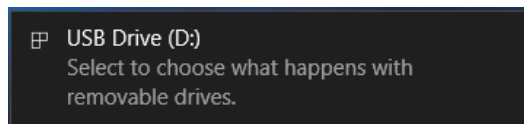
At this point, connect the USB memory to your computer and select "Next" on the installation screen. Confirm that the USB memory is normally recognized by the computer and displayed as a removable drive as below and proceed with creating OS media.



(3) .NET Framework 3.5 Offline installation

Make the Thermac Simulator recognize the created OS media on the PC you want to install (If you are using a USB memory or HDD, connect it to a PC, mount it on a PC if it is a DVD).

When the OS media is recognized correctly, the following popup will be displayed. In this example, you can see that the USB memory as the OS media has been assigned to D drive (D :).

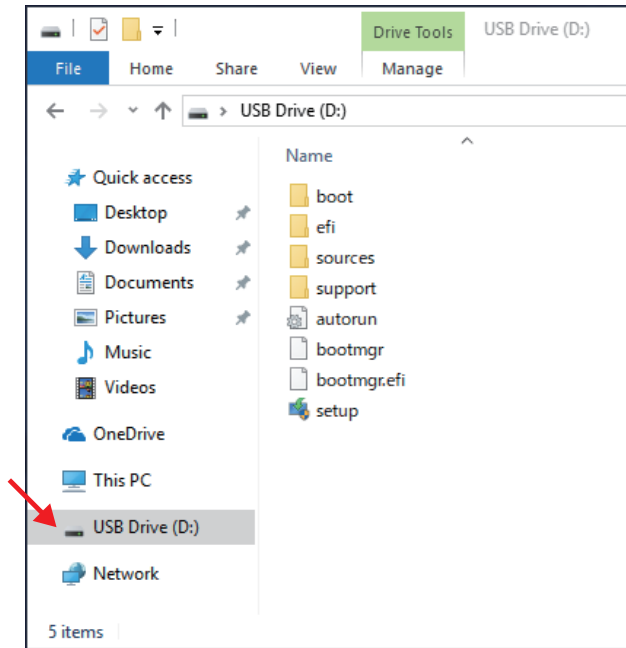


As we will use the drive information we have confirmed in the later operation, be sure to check which drive the OS media is assigned to.

Note It is possible to check the media with other methods. Click the Explorer icon located at the bottom of the desktop screen. (If there is no icon, hold down the Windows key and press the E key to start the explorer screen)

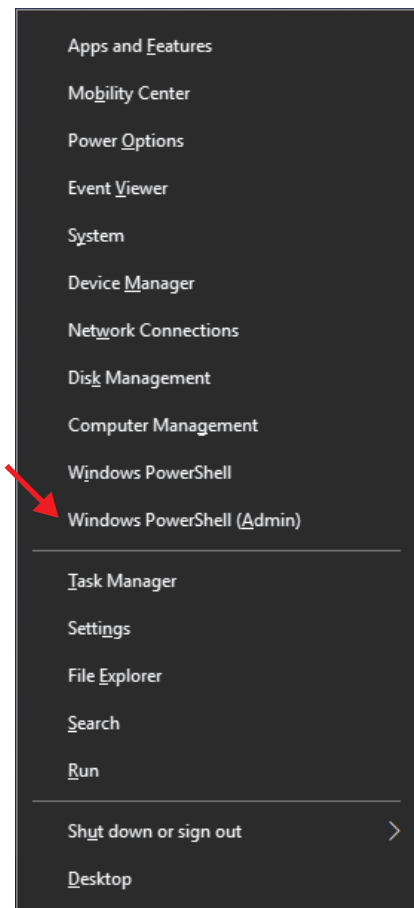


Since the Explorer screen starts, click the drive icon displayed on the left side of the screen that started up. If the OS media is recognized correctly, the drive containing the following data will be displayed.

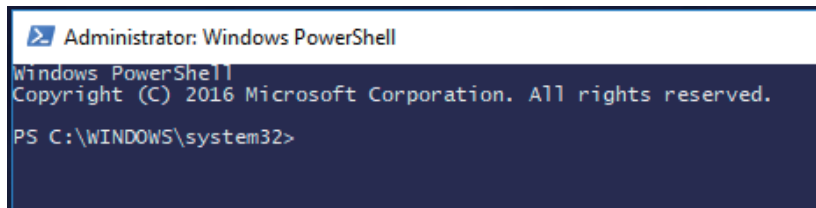


Execute the command prompt (Windows PowerShell) with administrator privileges after confirming that the OS media was recognized correctly.

Hold down the Windows key while pressing the X key, the following screen will be displayed, so select Windows PowerShell (Administrator).



After that, confirm that the following command prompt screen is displayed.



```
Administrator: Windows PowerShell
Windows PowerShell
Copyright (C) 2016 Microsoft Corporation. All rights reserved.
PS C:\WINDOWS\system32>
```

Enter the following command and press Enter to execute. In the command, "D:" is the drive to which the OS media checked earlier was assigned. Depending on the user environment used.

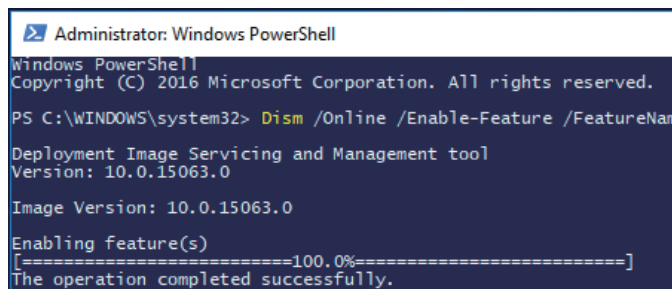
As you can see, be sure to modify the command according to the drive information you have confirmed.

Command:

```
Dism /Online /Enable-Feature /FeatureName:NetFX3 /All/Source:D:\Sources\Sxs /LimitAccess
```

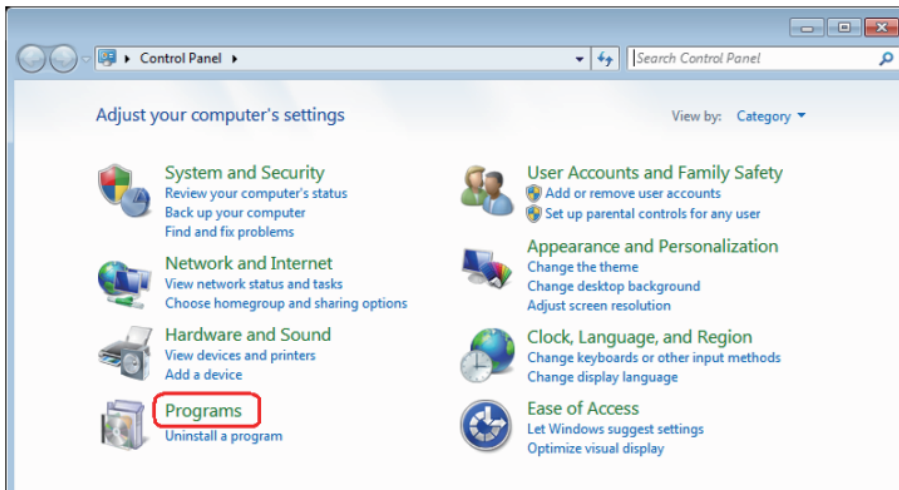
Note Enter the command on one line without line break. Insert a space between Dism and the set of words (/ ***) that compose the command.

Wait for a while until the completion screen as shown below. If this screen can be confirmed, the installation of .NET Framework 3.5 will be completed, continue installing the Thermac Simulator.

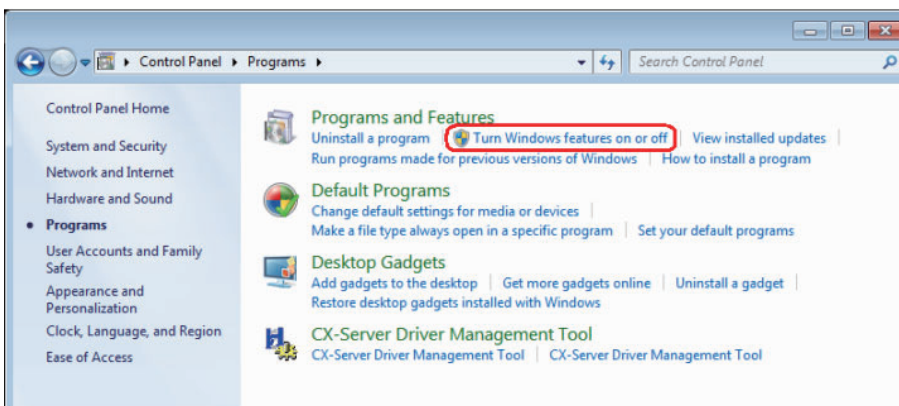


```
Administrator: Windows PowerShell
Windows PowerShell
Copyright (C) 2016 Microsoft Corporation. All rights reserved.
PS C:\WINDOWS\system32> Dism /Online /Enable-Feature /FeatureName
Deployment Image Servicing and Management tool
Version: 10.0.15063.0
Image Version: 10.0.15063.0
Enabling feature(s)
[=====100.0%=====]
The operation completed successfully.
```

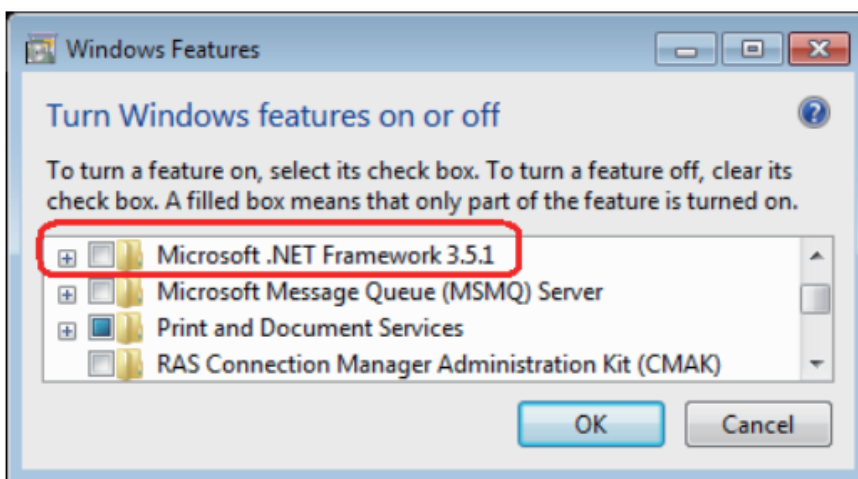
2 Select "Program" from the Control Panel.



3 Turn on or off Windows functions.



4 Check the check box of "Microsoft .NET Framework 3.5.1" and click "OK".



Conditions
for UseConnecting
the Computer
and ControllerBasic Tharmac
Simulator
Operation

Settings

Logging

Model
Creation

Simulation

1 Introduction

1-1 Conditions for Use

System Requirements

The following system requirements must be met to use the Tharmac Simulator.

Item	Specification
OS	Windows7 (32bit/64bit), Windows8.1 (32bit/64bit), Windows10 (32bit/64bit)
Processor	1 GHz or higher, 32 bit, or 64 bit or higher processor
RAM	1 GB or higher, or 2 GB or higher (64 bit)
Hard disk space	16 GB or higher, or 20 GB or higher (64 bit)
CD-ROM drive	1 drive min.
Monitor	XGA (1,024 × 768), 16-bit high color or better
Communications port	1 USB port min.

Windows is a registered trademark of Microsoft Corporation in the United States and other countries.

Conditions for Use

The following conditions must be met to use the Tharmac Simulator.

Applicable Controllers	E5□C-series Temperature Controllers except for Position-proportional and Programmable Models
Temperature Controller settings	<ol style="list-style-type: none"> The Tharmac Simulator cannot be used with any of the following settings. <ul style="list-style-type: none"> Input Type: 25 to 29 (analog input)^{*1} PID-ON/OFF: ON/OFF Standard/Heating-Cooling: Heating-Cooling ST: ON Direct/Reverse Operation: Direct operation Event Input 1 to 6 Assignments: Anything other than "NONE"^{*2, *3} <p>*1 Correct simulation results may not be possible if an Infrared Temperature Sensor is used.</p> <p>*2 If you change the event input assignment settings to "NONE" to use the Tharmac Simulator, be sure to return them to the original settings when you are done using the Tharmac Simulator.</p> <p>*3 If a work bit is set as an internal event in the logic operation settings, set the event input assignment to anything except Communications Writing Enable/Disable, RUN/STOP, or 100% AT Execute/Cancel.</p> For a Temperature Controller with a position-proportional output, temperature fluctuations may occur depending on the control period setting. The Tharmac Simulator cannot reproduce those temperature fluctuations in a simulation. A model cannot be created correctly if the MV Upper Limit or MV Lower Limit parameter is set to between -5.0% and -0.1% or between 100.1% and 105.0%. Set the MV Upper Limit parameter of the Temperature Controller to between 0.1% and 100.0% and the MV Lower Limit parameter to between 0.0% and 99.9%. The following parameters are not used in simulations. The default settings of the Temperature Controller are used by the Tharmac Simulator for these parameters. <ul style="list-style-type: none"> Minimum Output ON/OFF Band: 1.0% MV Change Rate Limit: 0.0%/s It may not be possible to create a correct model for devices for which the manipulated variable increases gradually during temperature rise due to SP ramp settings with a small slope.



Controlled Devices	<p>For the following controlled devices, there will be a large temperature deviation between a simulation and the actual Temperature Controller. Therefore the Thermac Simulator cannot be used for them.</p> <ul style="list-style-type: none"> • Heaters for which there is a large change in the resistance depending on the temperature • Devices for which boiling or melting occurs • Cooling devices that use direct operation • Devices for which there is high thermal interference • Devices that reach the set point in 10 s or less • Devices that have a set point near room temperature
---------------------------	---

Applicable Log Files from Other Companies

The Thermac Simulator can read log files created by the following software applications.

Temperature Controllers	Application
SDC15/25/26 (Azbil Corporation)	SLP-C35 Smart Loader Package
RB□00 (RKC Instrument Inc.)	PROTEM2

Company names and product names in this document are the trademarks or registered trademarks of their respective companies.

Conditions
for UseConnecting
the Computer
and ControllerBasic Tharmac
Simulator
Operation

Settings

Logging

Model
Creation

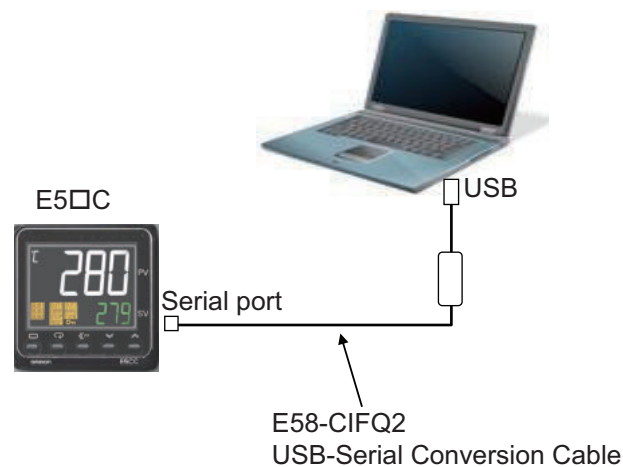
Simulation

1-2 Connecting to the Temperature Controller with a USB-Serial Conversion Cable

1

To collect log data from the Temperature Controller, connect the Temperature Controller to the computer with an E58-CIFQ2 USB-Serial Conversion Cable. The E58-CIFQ2-E is required to connect to the Setup Tool port on the front panel of the E5EC, E5AC, or E5DC, or to connect to the Setup Tool port on the bottom panel of the E5GC.

For details on connecting the Temperature Controller to the computer with an E58-CIFQ2 USB-Serial Conversion Cable, refer to the *E5□C Digital Temperature Controllers User's Manual* (Cat. No. H174).



You must install a driver for the cable in the computer. If you are using the CX-Thermo, then the driver installation procedure is not required.

Use the following procedure to install the driver.

1 Connect a USB port on the computer with a Setup Tool port on the Temperature Controller using the Cable.

2 Install the driver that comes with the Tharmac Simulator.

- Installation Procedure

When the Cable is connected to the computer, the OS detects the product as a new device. When it is detected, install the driver using the Installation Wizard.

Note 1 We recommend that you install the driver for each USB port on the computer at the start.

The Temperature Controller assigns a COM port number to each USB port on the computer. If the same USB port is used, you will be able to use the same COM port number even if you use a different Cable.

2 Installation of the driver will not be completed if the installation is canceled before it is completed.

Normal communications will not be possible unless the driver is installed completely.

If the driver is not installed completely, uninstall it, and then install it correctly.

3 Communications Condition Settings for the Setup Tool

A COM port number is automatically assigned to the USB-Serial Conversion Cable.

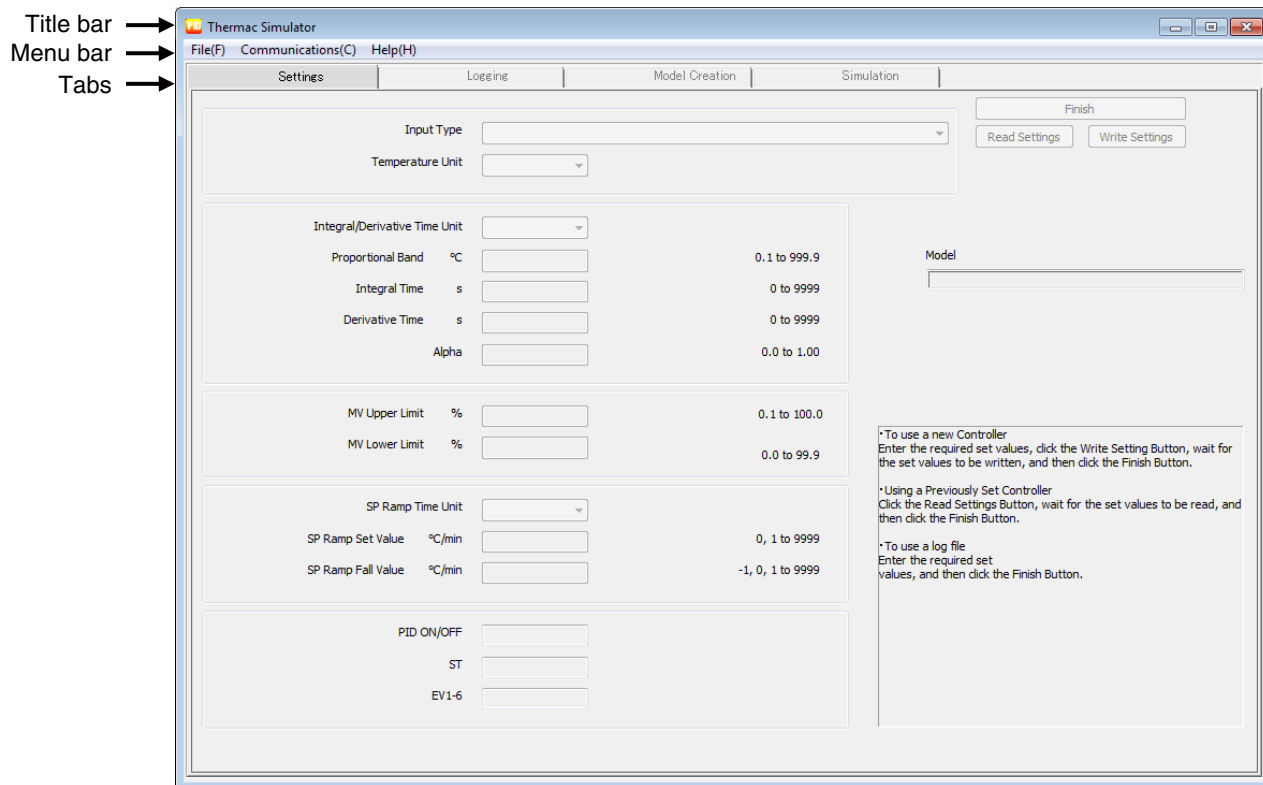


2 Basic Thermac Simulator Operation

2-1 Part Names and Functions

2-1 Part Names and Functions

2



- **Title Bar**
The title bar displays the current project name.
- **Menu Bar**
The menu bar provides the following menus and menu items.

Menu	Item	Description
File	New	Creates a new project.
	Open	Opens an existing project.
	Save	Overwrites the current project.
	Save As	Saves the current project under a different name.
	Exit	Exits the Thermac Simulator.
Communications	Port Settings	Used to select the serial port that is connected to the cable.
Help	Manual	Displays the manual.
	Version Information	Displays version information.

- **Tabs**
The following tabs are provided.

Tab	Function
Settings	Used to set the Temperature Controller parameters required to log data.
Logging	Used to log data to use in creating a model.
Model Creation	Used to create a model of the controlled device from log data.
Simulation	Used to perform temperature waveform simulations based on a model.



2-2 Files

The Thermac Simulator creates the following files.

These files are saved in the following folder by default: C:\Users*user_name*\Documents\Thermac Simulator.

File name (default)	Description
PJ1.tcs	Project file
PJ1_Log_data.csv	CSV file of log data collected on the Logging Tab Page
PJ1_Sim_data.csv	CSV file of the simulation results calculated from the Simulation Tab Page.



Precautions for Correct Use

A “system” folder is automatically created in the following directory when you start the Thermac Simulator.

C:\Users*user_name*\Documents\Thermac Simulator\

The system uses this “system” folder. Do not delete it.



2-3 Basic Operations

There are the following three cases for operating the Thermac Simulator.

Step	Tab page	Case 1 Using a New Controller	Case 2 Using a Previously Set Controller	Case 3 Using a Log File from Another Company	Reference page
①	Settings	Enter set values and write them.	Read set values.	Enter set values.	3-1
②	Logging	Collect log data.		Read a log file from another company.	3-5
③	Model Creation	Create a model.			3-10
④	Simulation	Perform a simulation.			3-13
		Write the set values.			
⑤		Confirm parameter settings on the actual equipment.			

1 Start the Thermac Simulator.

Use the following procedure to start the Thermac Simulator.

- Starting from the Windows Start Menu.
 - (1) Select **Programs – OMRON – Thermac Simulator – Thermac Simulator** from the Windows Start Menu. The Thermac Simulator will start.
Also, select **Thermac Simulator** by using Windows search function, the Thermac Simulator will be started.
 - (2) Create or select a project.
 - Creating a New Project
Select **File – New**. A project will be created and operation will be enabled.
 - Selecting an Existing Project
Select **File – Open** and then select a project.
- Starting from a Project File
Double-click a project file (extension: tcs). The Thermac Simulator will be started.

2 Perform operations on the tab pages.

Perform operations in order on the tab pages: Settings, Logging, Model Creation, and Simulation. You cannot move to the next tab page until you complete the operations for each tab page. To return to previous tabs and make changes, save the project first and then repeat the operations on all tab pages starting from the tab page where the change is required. If you do not repeat the settings, disagreements will occur between the settings on different tab pages.

Refer to the description of each tab page for details.

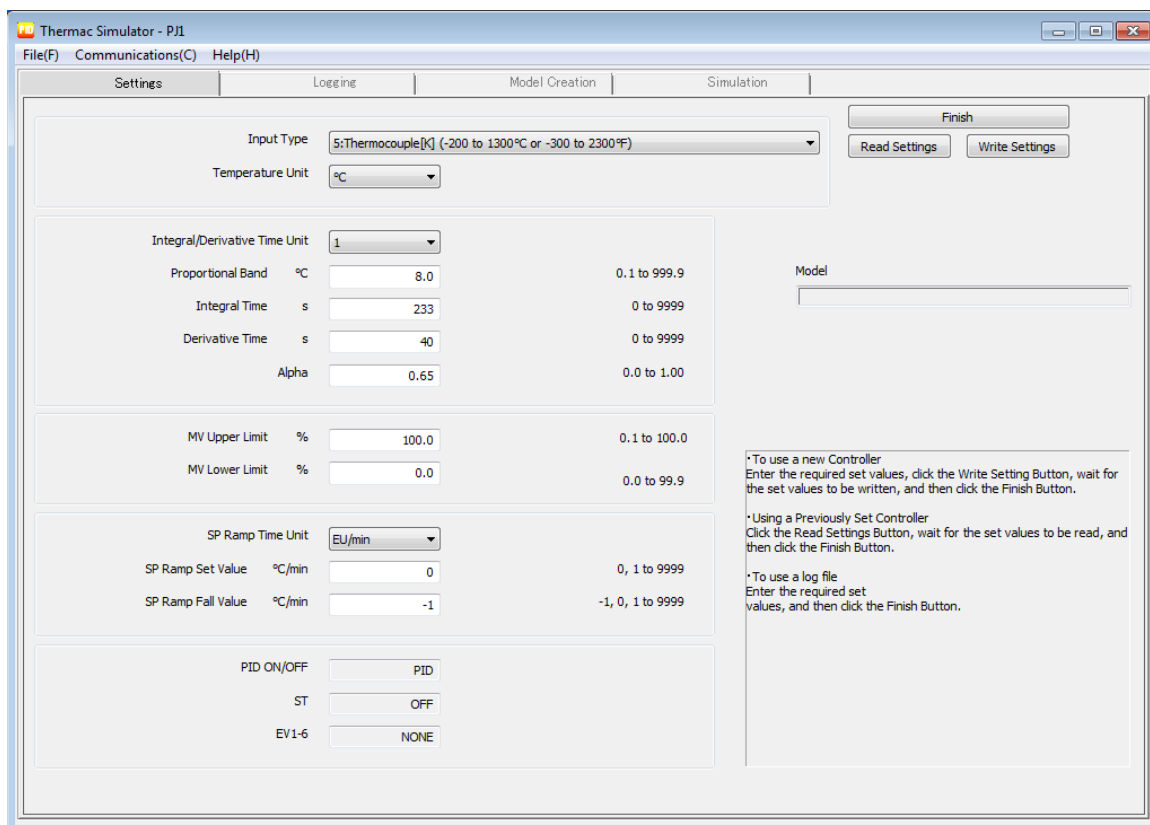
- 3** **Save the project.**
Select ***File – Save As or File – Save.***
- 4** **Exit the Thermac Simulator.**
Select ***File – Exit.***



3 Operations on the Tab Pages

3-1 Settings Tab Page

This tab page is used to make the settings that are required for simulation.



The setting procedure depends on how you will use the Thermac Simulator. There are the following three cases. The setting procedure for each case is given below.

Case 1: Using a New Controller

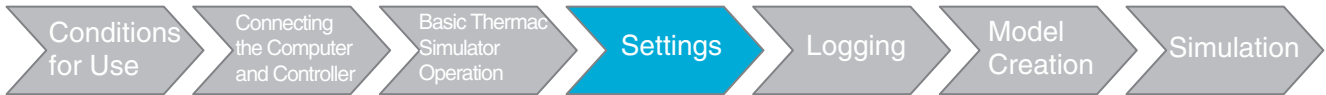
All settings are entered and the entered values are written to a Temperature Controller that has not yet been used.

Case 2: Using a Previously Set Controller

The settings are read from a Temperature Controller that has already been used.

Case 3: Using a Log File from Another Company

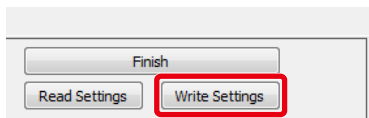
The settings are entered. Because there is already a log file, a Temperature Controller is not used.



3-1-1 Using a New Controller

Use the following procedure to set the parameters.

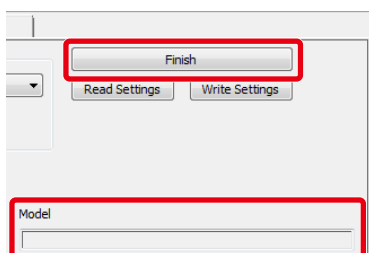
- 1** Connect the Temperature Controller to the computer with a USB-Serial Conversion Cable.
- 2** Start the Thermac Simulator and create a new file.
- 3** Set the Input Type and Temperature Unit parameters.
- 4** If the PID constants were decided in advance, set the PID constants (i.e., the Proportional Band, Integral Time, and Derivative Time parameters).
Leave the Integral/Derivative Time Unit and Alpha parameters at their default values.
If the setting of the Integral/Derivative Time Unit parameter is changed, the PID constants will be initialized. If you need to change this parameter, do so before you set the PID constants.
- 5** Change the settings of the other parameters as required.
The displayed values will be written for the PID-ON/OFF, ST, and Event Input 1 to 6 Assignment parameters.
If you change the setting of the Input Type parameter, the setting ranges for the SP Ramp Set Value and SP Ramp Fall Value parameters will also change. If you need to change the Input Type parameter, set it first. The following settings can be used.
You can set the SP Ramp Set Value or SP Ramp Fall Value parameter to 0 or 0.0 to disable the function.
You can set the SP Ramp Fall Value parameter to -1 or -0.1 to use the same set value as the SP Ramp Set Value parameter.
- 6** Click the Write Settings Button to write the set values to the Temperature Controller.
A confirmation message will be displayed. Click the OK Button.
If an error occurs, a message will be displayed. Follow the instructions given in the message.



- 7** Check the model shown in the *Model* Box.

After the set values are written to the Temperature Controller, the model of the Temperature Controller will be displayed in the *Model* Box.

Click the **Finish** Button to go to the Logging Tab Page.

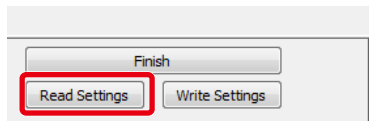




3-1-2 Using a Previously Set Controller

Use the following procedure to set the parameters.

- 1** Connect the Temperature Controller to the computer with a USB-Serial Conversion Cable.
- 2** Start the Thermac Simulator and create a new file.
- 3** Click the **Read Settings Button** to read the set values from the Temperature Controller. A confirmation message will be displayed. Click the **OK Button**. If an error occurs, a message will be displayed. Follow the instructions given in the message.



Precautions for Correct Use

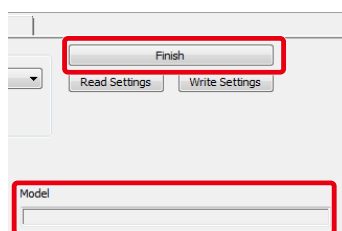
The Thermac Simulator cannot be used with any of the following settings. Change these settings temporarily if doing so will not adversely affect the control system.

Parameter name	Setting
Input Type	25 to 29 (analog input)
PID-ON/OFF	ON/OFF
Standard or Heating/Cooling	Heating/Cooling
ST	ON
Direct/Reverse Operation	Direct
Event Input 1 or 6 Assignments	Any setting except for "NONE"

- 4** Check the model shown in the *Model Box*.

After the set values are read from the Temperature Controller, the model of the Temperature Controller will be displayed in the *Model Box*.

Click the **Finish Button** to go to the Logging Tab Page.



3-1-3 Using a Log File from Another Company

Confirm that the Temperature Controller from which the log file was taken has the following settings or model. The Thermac Simulator cannot be used if these conditions are not met.

- **SDC15/25/26 (Azbil Corporation)**

Parameter	Setting
PV Input Range Type	1 to 68: Temperature
Control Method	1: Fixed PID
Heat/Cool Control	0: Disabled
Control Action (Direct/Reverse)	0: Heat control (reverse)



● **RB□00 (RKC Instrument Inc.)**

Model code: RB□00F①...

The □ in the model code is replaced by a number. The ① is replaced by a letter.

Use the following procedure to set the parameters.

1 Start the Thermac Simulator and create a new file.

2 Use the following correlation table to set the parameters.

Always set the Input Type parameter, Temperature Unit parameter, and PID constants (Proportional Band, Integral Time, and Derivative Time parameters).

Set other parameters as required.

If you change the setting of the Input Type parameter, the setting ranges for the SP Ramp Set Value and SP Ramp Fall Value parameters will also change. If you need to change the Input Type parameter, set it first. The following settings can be used.

You can set the SP Ramp Set Value or SP Ramp Fall Value parameter to 0 or 0.0 to disable the function.

You can set the SP Ramp Fall Value parameter to -1 or -0.1 to use the same set value as the SP Ramp Set Value parameter.

3 Click the Finish Button to go to the Logging Tab Page.



Set the parameters according to the following correlation table. Leave any parameters that are not being used at the default settings.

Parameter	SDC15/25/26 (Azbil Corporation)	RB□00 (RKC Instrument Inc.)
Input Type	Set the PV Range Type parameter to a close value.	Set the Input Range parameter to a close value.
Temperature Unit	Temperature Unit	Default (Use the default setting.)
Integral/Derivative Time Unit	Default (Use the default setting.)	
Proportional Band	Proportional Band (converted to temperature units)	Proportional Band (Heat-Side)
Integral Time	Integral Time	Integral Time
Derivative Time	Derivative Time	Derivative Time
Alpha	Default (Use the default setting.)	
MV Upper Limit	MV High Limit	Output Limiter High
MV Lower Limit	MV Low Limit	Output Limiter Low
SP Ramp Time Unit	SP Ramp Unit	Setting Change Rate Limiter Unit Time
SP Ramp Set Value	SP Ramp-Up	Setting Change Rate Limiter Up
SP Ramp Fall Value	SP Ramp-Down	Setting Change Rate Limiter Down

Conditions
for UseConnecting
the Computer
and ControllerBasic Tharmac
Simulator
Operation

Settings

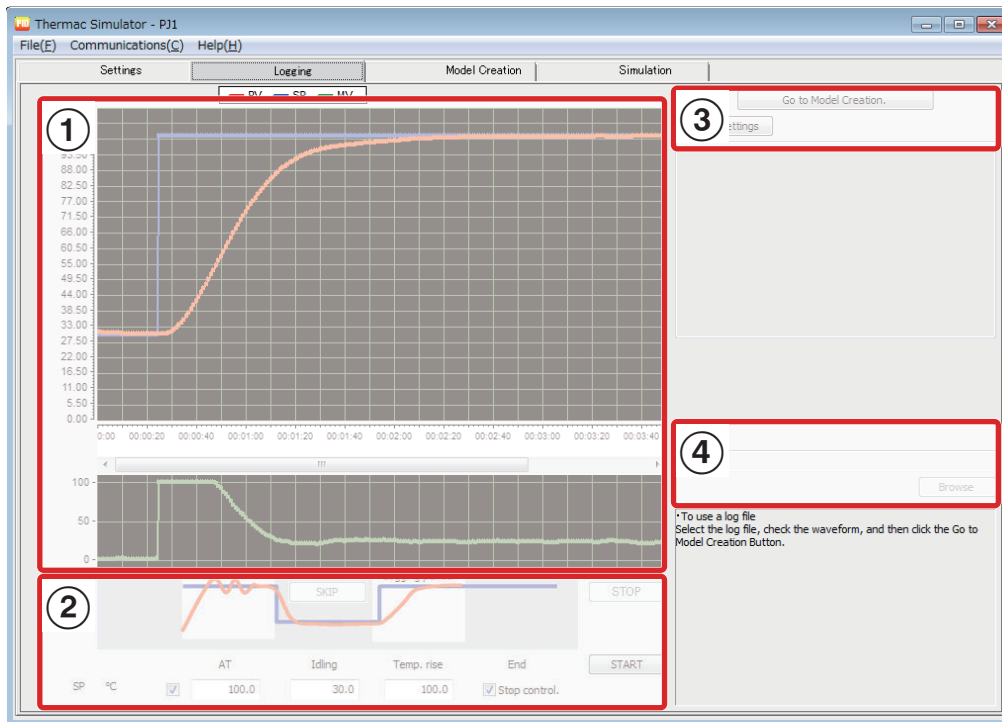
Logging

Model
Creation

Simulation

3-2 Logging Tab Page

This tab page is used to collect the log data that is required to create a model. The tab page configuration is shown below.



①	Displays the process value (PV), set point (SP), and manipulated variable (MV).
②	Used to set the logging conditions.
③	Used to set the graph scales. Also, used to move to the Model Creation Tab Page.
④	Used to read log data from another company.

Log data is collected or a log file is read for the following cases. The processing for each case is given below.

Case 1: Using a New Controller and Case 2: Using a Previously Set Controller

Used to log data to use in creating a model.

Case 3: Using a Log File from Another Company

Used to read an existing log file.



3-2-1 Collecting Log Data

Use the following procedure to collect the log data.

1 Make the settings for autotuning (AT).

Select or clear the *AT* Check Box according to the cases given in the following table.

Case	AT Check Box	Remarks
Using a New Controller	Select the check box (execute AT).	<ul style="list-style-type: none"> If autotuning cannot be performed due to the characteristics of the controlled device, clear the selection of the check box. If you changed the PID constants on the Settings Tab Page, clear the selection of the check box.
Using a Previously Set Controller	Clear the selection (do not execute AT).	To execute autotuning again, select the check box.

2 Set the set points.

Set the set points according to the following table.

Phase	Setting
AT	Set this set point if you selected the AT Check Box. Set the same value as for temperature rise. However, if the temperature fluctuation range during autotuning is a problem, set the value according to the allowable fluctuation range.
Idling	$(SP \text{ for temperature rise} - \text{Normal temperature}) \times 10\% + \text{Normal temperature}$ Example: $SP \text{ for temperature rise} = 100^\circ\text{C}$ and $\text{Normal temperature} = 20^\circ\text{C}$ $(100 - 20) \times 0.1 + 20 = 28$
Temp. rise	Set the set point at which the temperature is to be controlled.

3 Set the operation to perform after the completion of logging.

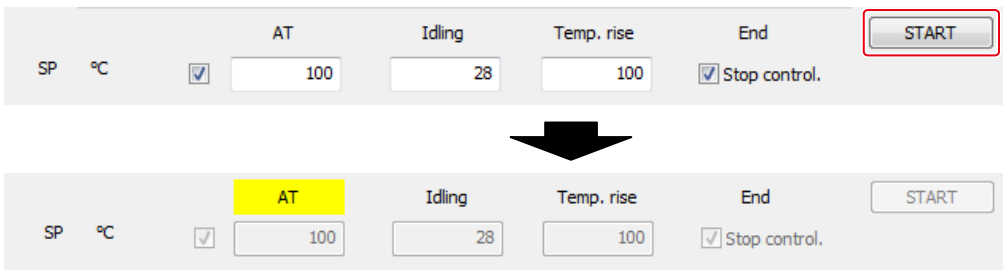
To continue control operation even after logging has been completed, clear the selection of the *Stop control* Check Box. If you select this check box, operation will be stopped.

4 Click the START Button to start logging.

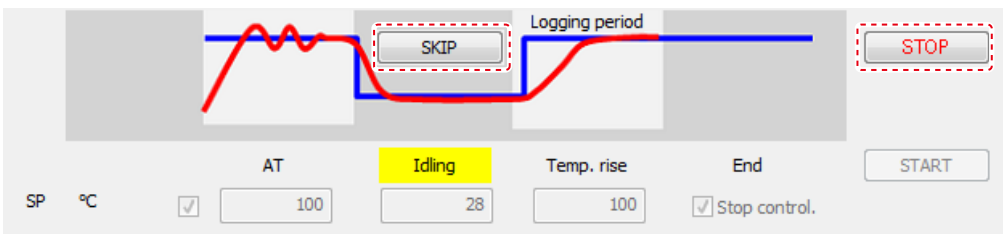
A confirmation message will be displayed. Click the **OK** Button.

There are four phases to logging: AT, idling, temperature rise, and end. Refer to *4 Appendix* (page 4-1) for the conditions to move between the phases.

The logging time is 60,000 s (approx. 17 hours) maximum. If the maximum value is exceeded, logging will stop according to the setting of the *Stop control* Check Box.



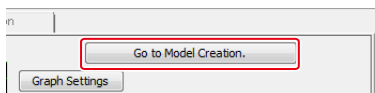
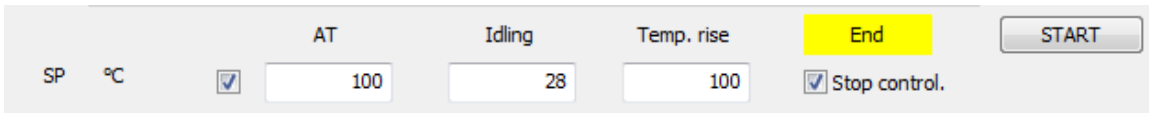
- To cancel logging, e.g., when unexpected temperature rise occurs, click the **STOP** Button.
- If too much time is required for the temperature to stabilize in the idling phase, you can click the **SKIP** Button to force a move to the temperature rise phase. If too much time is required for the temperature to stabilize in the temperature rise phase, you can click the **STOP** Button to force a move to the end phase. If you use either of these buttons, however, the deviation will increase for model creation.



5 Stop logging.

When logging is stopped, end phase is entered.

Click the **Go to Model Creation** Button to go to the Model Creation Tab Page.





3-2-2 Reading a Log File from Another Company

A log file that was created with one of the following software applications can be read.

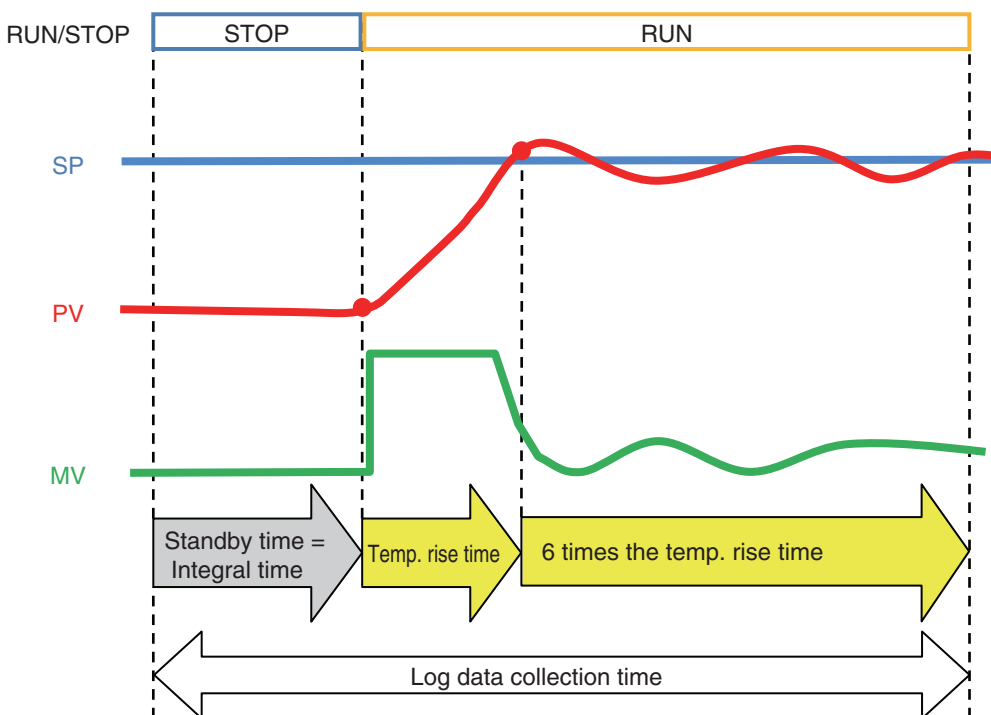
Temperature Controllers	Application
SDC15/25/26 (Azbil Corporation)	SLP-C35 Smart Loader Package
RBC00 (RKC Instrument Inc.)	PROTEM2

Use the following procedure to create and read a log file from another company.

1 Create a log file from another company.

Create a log file that has the type of waveform as the one shown in the following figure.

Before log data collection, remain in STOP status until the PV stabilizes at the normal temperature.



Collect log data according to the information in the following table and create a log file.

Application	SLP-C35 Smart Loader Package	PROTEM2
Data	1: PV 2: MV 3: SP	Measured Value (PV) Monitor Manipulated Output Value (MV1) Monitor (Heat-Side): MV Set Value 1 (SV1): SV1
Time Period	1 s (High-speed trend: Not used.)	1 s (Cycle time: 1 s)

However, if you use a log file from another company, the PV will change stepwise when control starts from a stopped state. This will tend to cause more deviation when the model is created in comparison with using log data collection. For some Temperature Controllers, the MV may be less than 0.0% in STOP status. If this occurs, a model cannot be created correctly. Overwrite all MVs that are lower than 0.0% with 0.0% and then create the model.

2 Read the log file.

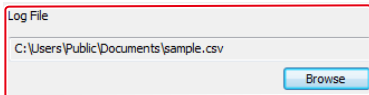
Use the following procedure to read the log file.

(1) Select the log file.

Click the **Browse** Button to display a dialog box to select the log file, and select the log file.



The selected name will be displayed.

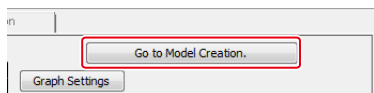


(2) Check the waveform for the file.

The log waveforms for the process value (PV), set point (SP), and manipulated variable (MV) will be displayed. To change to a different log file, select the log file again.

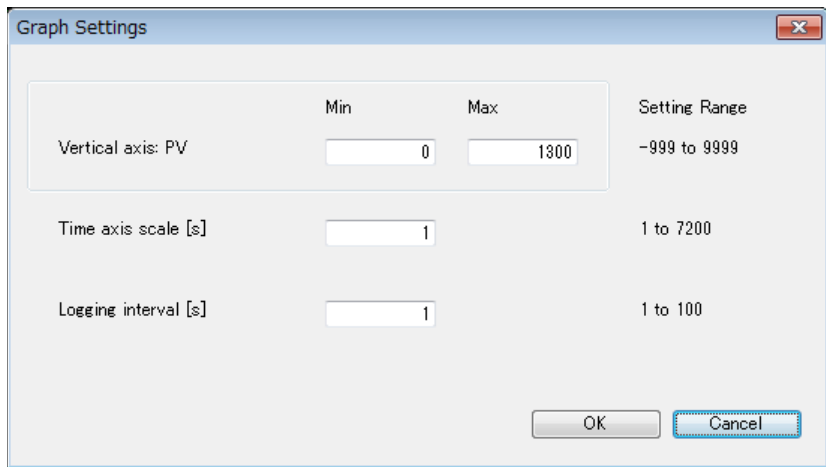
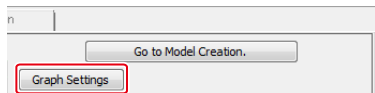
(3) Move to the Model Creation Tab Page.

Click the **Go to Model Creation** Button to go to the Model Creation Tab Page.



3-2-3 Adjusting the Graph Scales

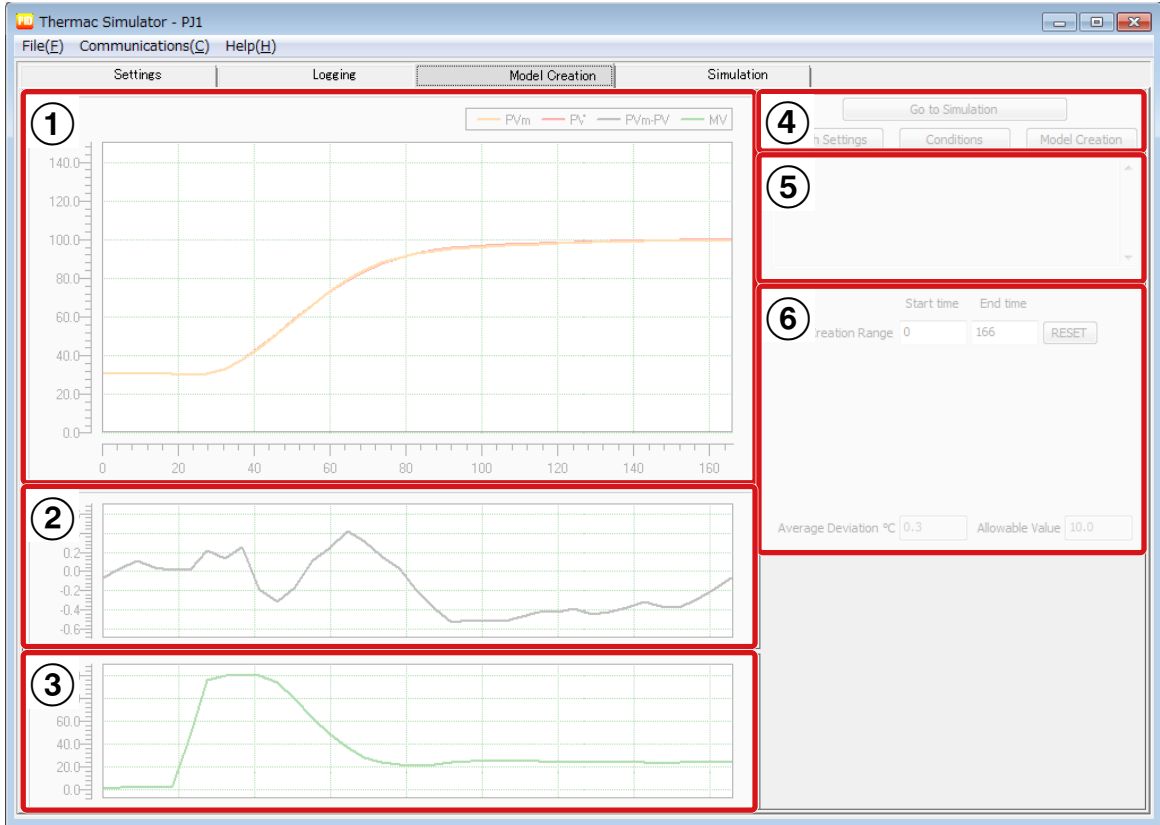
To change the graph scales, click the **Graph Settings** Button to display the following dialog box and adjust the required items. When you are finished making changes, click the **OK** Button. If you close the dialog box by clicking the **Cancel** Button, any changes will be lost. You cannot change the time axis scale or logging interval while logging is in progress.





3-3 Model Creation Tab Page

This tab page is used to create the model that is required for simulation. A model is a mathematical representation of the temperature characteristics of a device. It is created from the process values (PVs) and the values of the manipulated variable (MV). The tab page configuration is shown below.



①	Displays the waveform of logged process values (PVs) and the PVm waveform.*1
②	Displays the deviation as a waveform.*1, *2
③	Displays the waveform of logged values of the manipulated variable (MV).
④	Used to create the model. Also used to move to the Simulation Tab Page.
⑤	Displays error messages.
⑥	This waveform is not displayed until the model is created.*1, *2

*1 PVm: Values calculated from the model

Deviation: The difference between PV and PVm

Average Deviation: The absolute values of the differences between PV and PVm averaged over time.

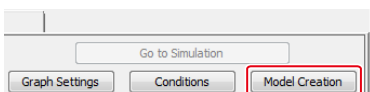
*2 This waveform is not displayed until the model is created.



3-3-1 Creating the Model

1 Check the log waveform that will be used to create the model.
The waveforms of the logged process values (PVs) and values of the manipulated variable (MV) that were selected on the Logging Tab Page are displayed.

2 Start model creation.
Click the **Model Creation** Button to start creation of the model.



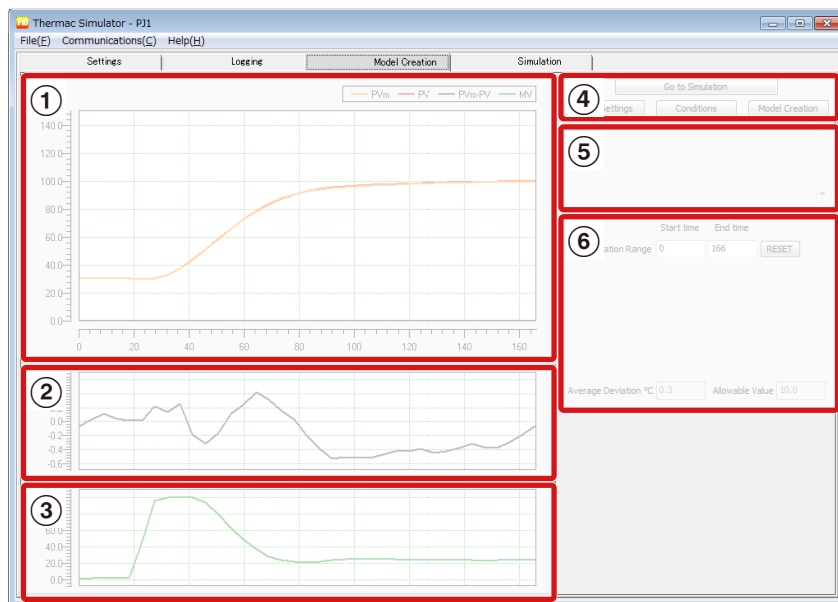
A progress bar will be displayed to show the progress of model creation. The longer the logging time was, the more time will be required for model creation.

3 If model creation is completed successfully, the Simulation Tab Page will be displayed automatically.

Refer to 3-4 PID Simulation (page 3-13) for operating procedures on the Simulation Tab Page.

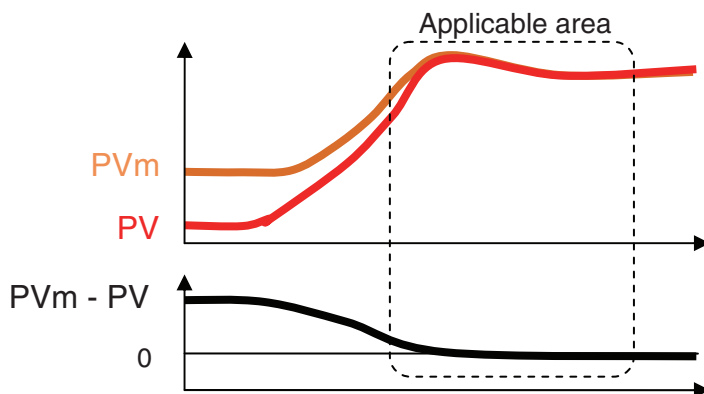
4 If the model could not be created, the following will be displayed.

- ① The P_{Vm} values calculated from the model will be added and the model creation range (i.e., the area that is not grayed out) will be displayed.
- ② The deviations between PV and P_{Vm} will be displayed.
- ⑤ An error message will be displayed.
- ⑥ The model creation range and average deviation will be displayed.



Use the following information to troubleshoot the problem.

Error message	Cause	Correction
If the average deviation is allowable, go to the simulation. If it is not allowable, log the data again.	The average deviation exceeded the allowable value.	If the deviation shown in the applicable area in the following figure is minimal, click the Go to Simulation Button to move to the Simulation Tab Page.
An unstable model was created. Log the data again.	Correct log data was not collected.	Check the log waveform to see if it is wrong. Refer to 3-2 Logging Tab Page (page 3-5) for details.



The absolute average deviation is displayed. If it exceeds the allowable value, an error will occur.

Average Deviation °C Allowable Value

Do not change the model creation range. You can restore the original values by clicking the **RESET** Button.

Start time End time

Model Creation Range



Additional Information

The conditions for creating the model will be displayed if you click the **Conditions** Button. Use the default values.

3-3-2 Adjusting the Graph Scales

To change the graph scales, click the **Graph Settings** Button to display the following dialog box and adjust the required items. When you are finished making changes, click the **OK** Button. If you close the dialog box by clicking the **Cancel** Button, any changes will be lost.

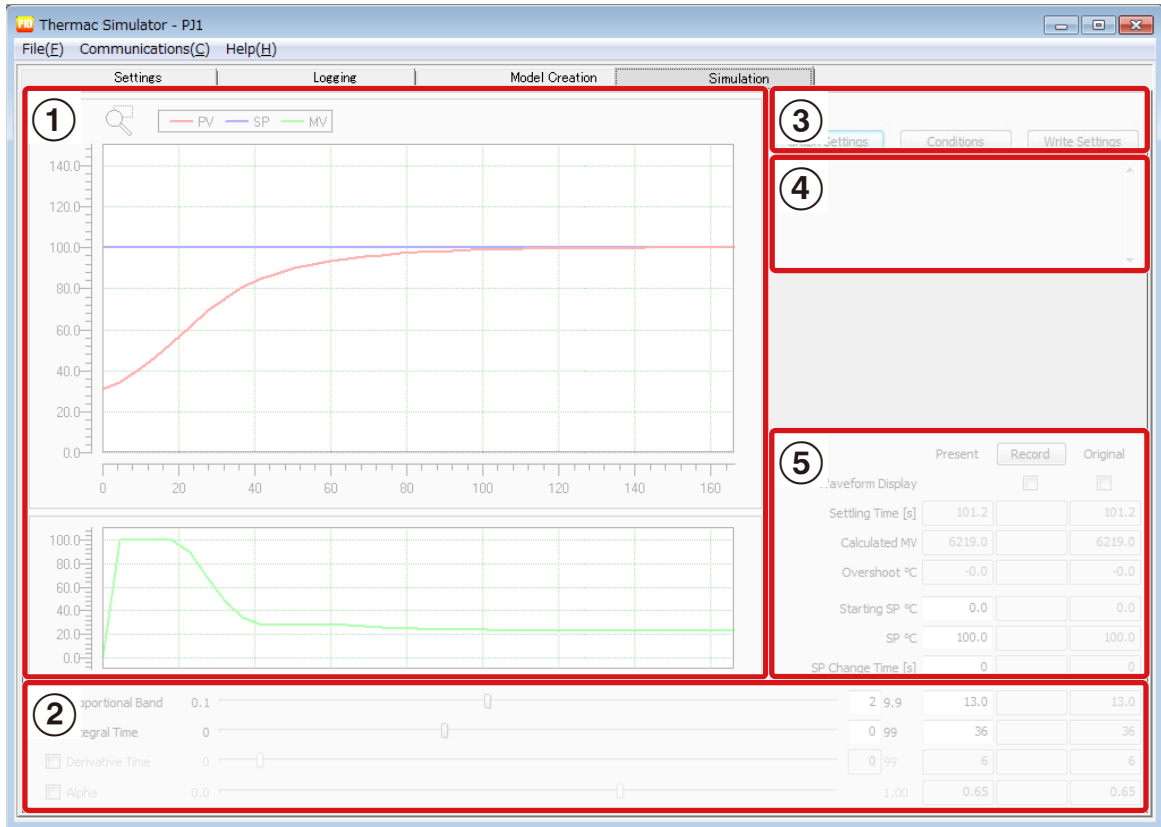
Graph Settings ✕

	Min	Max	Setting Range
Vertical axis: PV	<input type="text" value="0"/>	<input type="text" value="150"/>	-999 to 9999
Time axis [s]	<input type="text" value="0"/>	<input type="text" value="166"/>	0 to 60000



3-4 PID Simulation

The Simulation Tab Page is used to simulate a PV waveform. The tab page configuration is shown below.



①	Displays the process value (PV), set point (SP), and manipulated variable (MV).
②	Used to change the PID constants and alpha value. The simulation waveform is updated whenever a value is changed.
③	Used to set the graph scales and simulation conditions. Also used to write the adjusted set values to the Temperature Controller.
④	Displays error messages and other messages during operation.
⑤	Displays information on the simulation waveform and used to change the set point (SP). Can also be used to record the waveform and to compare a recorded waveform with the waveform that is currently being adjusted.



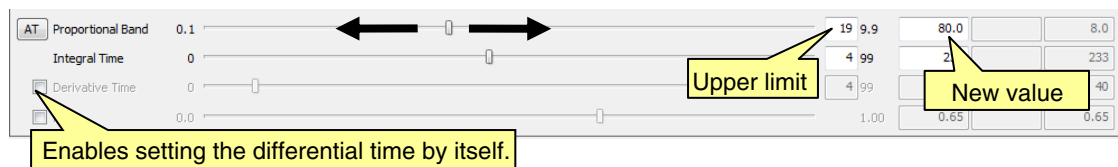
3-4-1 Adjusting the PID Constants

You can change the PID constants and then simulate the PV waveform.

1 Changing the Proportional Band (P)

Move the slider bar to the left or right to change the value. The new value is displayed to the right of the bar. You can also input the value directly in the box on the right of the bar. You can set the upper limit of the bar in the upper limit box to the right of the bar. Enter the third and fourth digits of the upper limit of the bar.

Example: To specify an upper limit of 199.9 for the bar, enter “19”.



2 Changing the Integral Time (I)

The procedure is essentially the same as for the proportional band.

3 Changing the Derivative Time (D)

By default, the derivative time is set automatically according to the value of the integral time. Select the check box to change the derivative time by itself. The procedure is essentially the same as for the proportional band.

Parameter	Setting range
P	0.1 to 999.9
I and D	Integral/derivative time unit = 1 s: 0 to 9,999 Integral/derivative time unit = 0.1 s: 0.0 to 999.9

* If the integral time is 0, the manual reset value is processed with the following values.
 Previously set Temperature Controller: Set value of the parameter from Temperature Controller
 Other cases: 50.0%



Additional Information

The following tables describe the trends in the PV waveforms for changes in the PID constants. **When the Proportional Band (P) Is Adjusted**

Increased		The curve rises gradually, and a long stabilization time is created, but overshooting is prevented.
Decreased		Overshooting and hunting occur, but the set value is quickly reached and the temperature stabilizes.

When the Integral Time (I) Is Adjusted

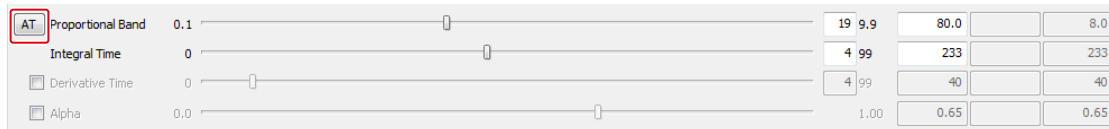
Increased		It takes a long time to reach the set point. It takes time to achieve a stable state, but overshooting, undershooting, and hunting are reduced.
Decreased		Overshooting and undershooting occur. Hunting occurs. The Temperature Controller starts up faster.

When the Derivative Time (D) Is Adjusted

Increased		Overshooting, undershooting, and stabilization times are reduced, but fine hunting occurs on changes in the curve itself.
Decreased		Overshooting and undershooting increase, and it takes time to return to the set point.

3-4-2 Executing Autotuning (AT)

You can perform autotuning during a simulation. This is useful when autotuning cannot be performed for the actual system or when it is difficult to set the PID constants properly. Click the **AT** Button to execute autotuning.



A message is displayed during autotuning and the PID constants are updated when it is completed. An error message is displayed in the message area if autotuning is canceled or an error occurs.

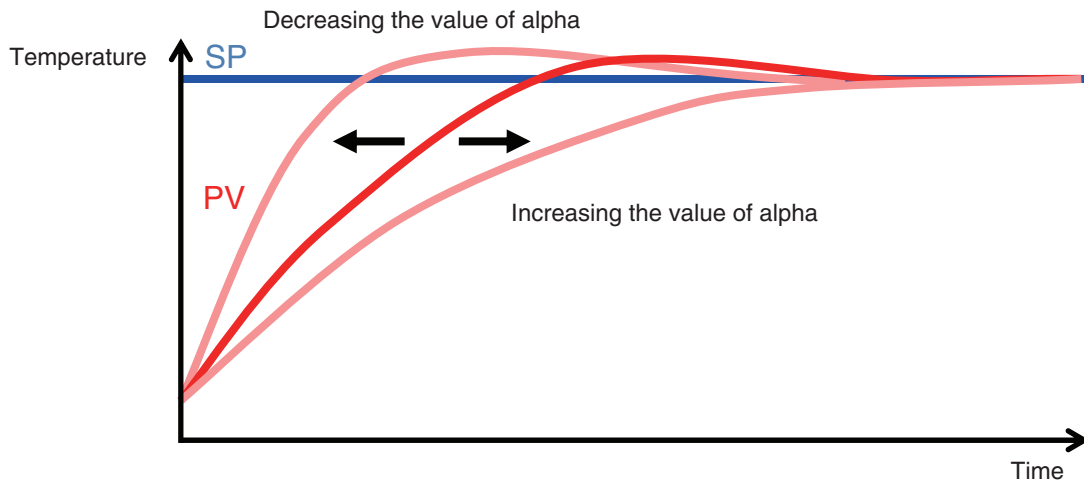


3-4-3 Adjusting the Rising Portion of the PV Waveform

You may be able to improve the rising portion of the PV waveform by adjusting alpha. Select the check box to change alpha. The procedure is essentially the same as for the proportional band.



Alpha	Effect
Decreasing the value	The rising time is reduced. However, overshooting will become larger.
Increasing the value	Overshooting will be suppressed. However, the rising time will increase.





3-4-4 Changing the Set Point

You can change the set point and then perform a simulation. You can also set the original set point (the starting SP) and the timing for changing the set point.

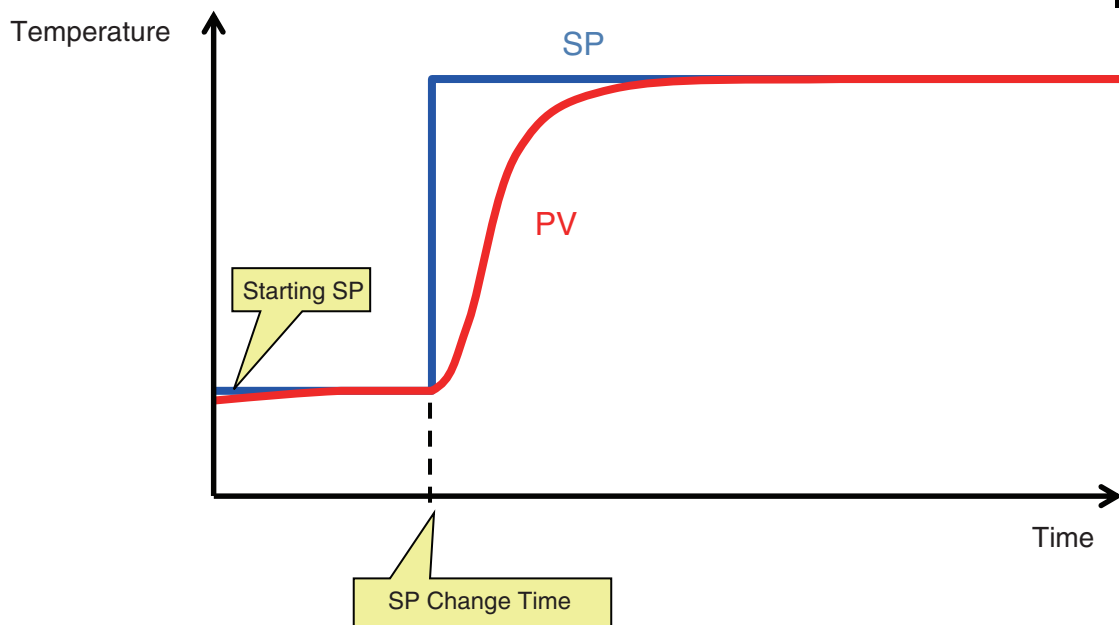
(1) Changing the Set Point

The following text boxes are used to change the set point.

(2) Changing the Starting SP

Set the starting SP and the SP change time as required.

Starting SP °C	25.0		0.0
SP °C	100.0		100.0
SP Change Time [s]	25		0



Parameter	Setting range
Starting SP	Same as temperature range of the input type
SP *	
SP Change Time	0 to 60,000

*If you use a log file from another company, the last PV in the log data is used as the SP.



3-4-5 Comparing Waveforms during Adjustment

You can save a waveform temporarily during adjustment and then compare it with the waveform after adjustment is completed. You can also perform comparisons with the original waveform from the start of simulation. The procedure and waveform display examples are given below.

(1) Temporarily Saving a Waveform

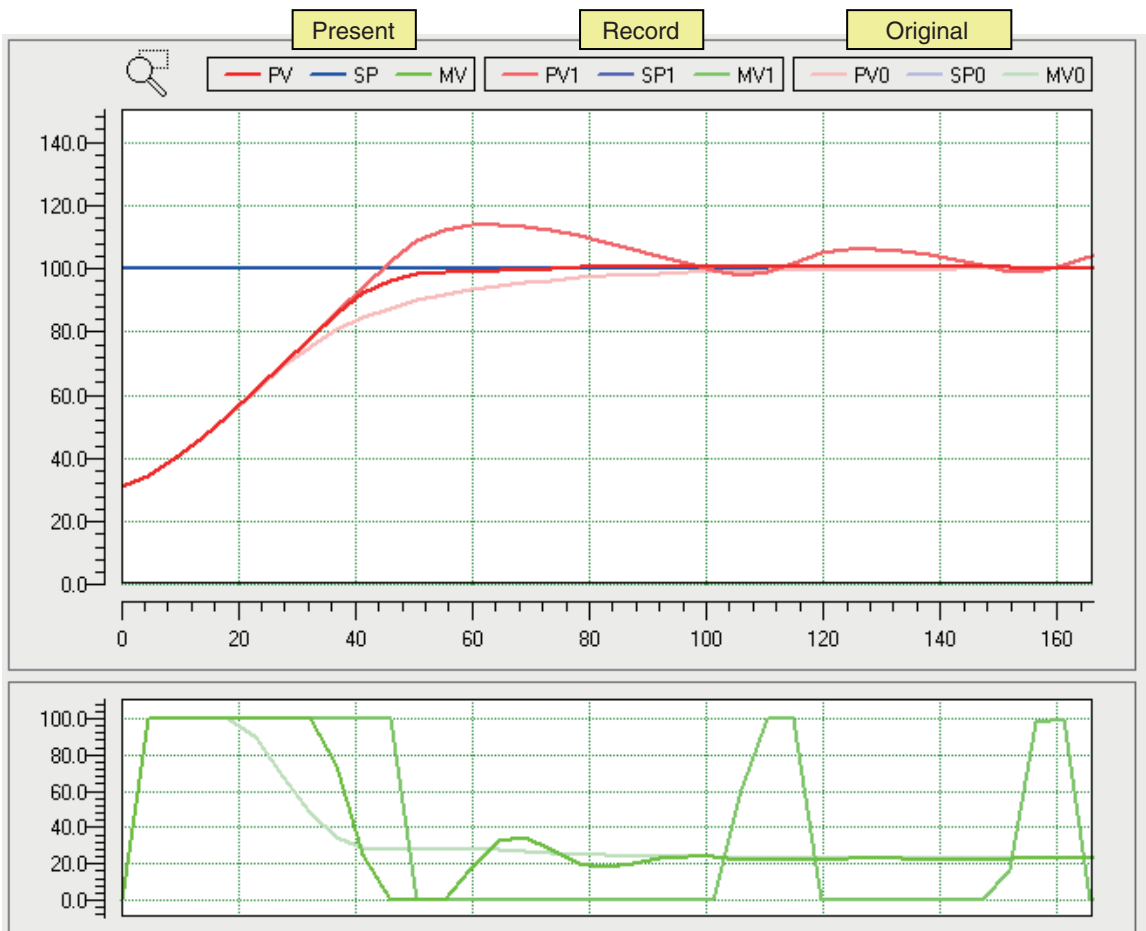
Click the **Record** Button to temporarily save the present waveform.

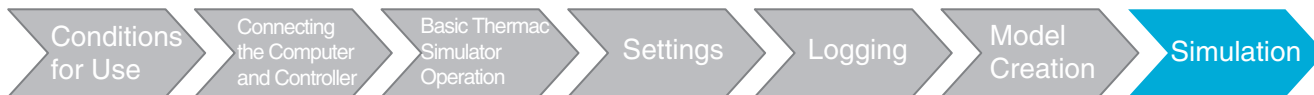
(2) Comparison with the Temporarily Saved Waveform

Select the check box below the **Record** Button to display the temporarily saved waveform.

(3) Comparison with the Original Waveform

Select the check box below the **Original** label to display the original waveform from the start of simulation.





3-4-6 Checking Waveform Information

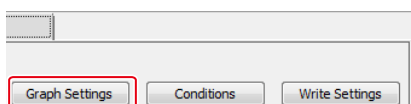
You can check the settling time and overshoot with the following text boxes. You can also check the same information for the recorded and original waveforms.

	Present	Record	Original
Waveform Display	<input type="checkbox"/>	<input type="checkbox"/>	<input type="checkbox"/>
Settling Time [s]	50.6	165.6	101.2
Calculated MV	6346.6	6786.2	6219.0
Overshoot °C	0.9	14.1	0.0
Starting SP °C	0.0	0.0	0.0

Item	Description
Settling Time	The settling time is the time required for the PV to stabilize within the settling width of the SP. Refer to the <i>3-4-9 Changing Simulation Conditions</i> (page 3-21) for information on the settling width.
Calculated MV	The calculated value of the MV in the MV waveform is given. You can also specify converting the value to the power consumption. Refer to the <i>3-4-9 Changing Simulation Conditions</i> (page 3-21) for information on power consumption.
Overshoot	The amount by which the PV overshoots the SP in the rising portion of the PV waveform is displayed.

3-4-7 Adjusting the Graph Scales

To change the graph scales, click the **Graph Settings** Button to display the following dialog box and adjust the required items. When you are finished making changes, click the **OK** Button. If you close the dialog box by clicking the **Cancel** Button, any changes will be lost.



Graph Settings ✕

	Min	Max	Setting Range
Vertical axis: PV	<input type="text" value="0"/>	<input type="text" value="150"/>	-999 to 9999
Vertical axis: MV [%]	<input type="text" value="0.0"/>	<input type="text" value="100.0"/>	0.0 to 100.0
Time axis [s]	<input type="text" value="0"/>	<input type="text" value="166"/>	1 to 60000



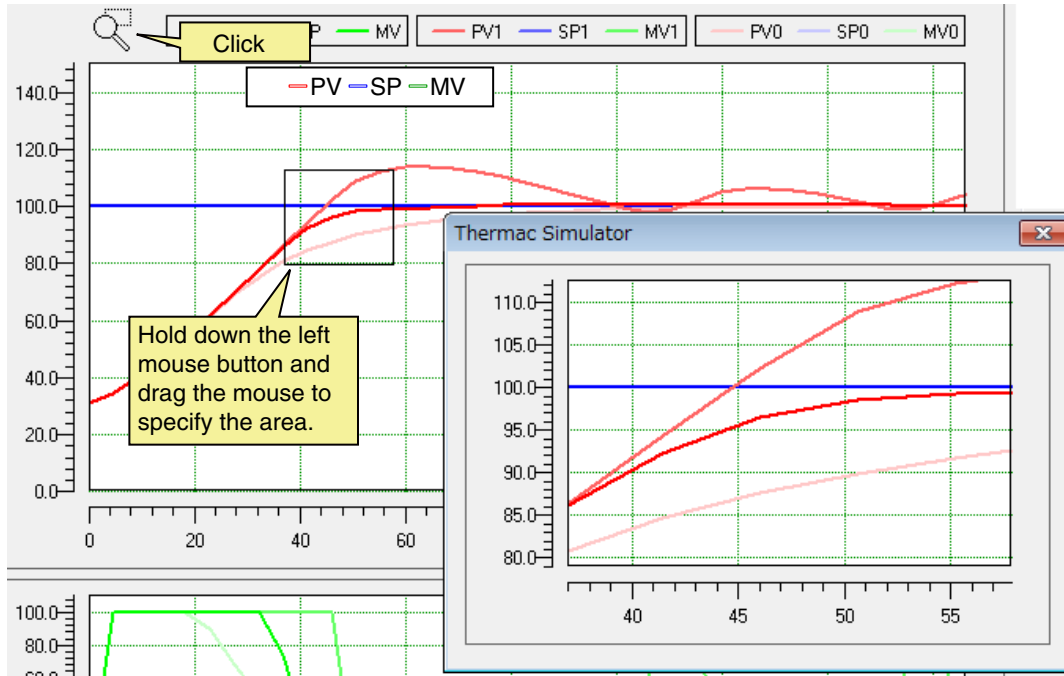
Additional Information

Simulation is performed for the maximum value of the time axis. If you change the time axis, the values in the Settling Time, Calculated MV (or power consumption), and Overshoot Boxes may change.



3-4-8 Enlarging the PV Waveform

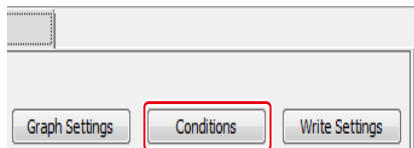
You can enlarge part of the PV waveform. Click the enlargement icon, hold down the left mouse button, and select the area to enlarge. The enlarged part of the waveform will be displayed when you release the left mouse button.





3-4-9 Changing Simulation Conditions

You can change the settings on the following dialog box. Click the **Conditions** Button to display this dialog box, and then change the required items. When you are finished making changes, click the **OK** Button. If you close the dialog box by clicking the **Cancel** Button, any changes will be lost.



Conditions ✕

	Present	Record	Original	Setting Range
MV				
Upper Limit %	<input type="text" value="100.0"/>	<input type="text" value="100.0"/>	<input type="text" value="100.0"/>	0.1 to 100.0
Lower Limit %	<input type="text" value="0.0"/>	<input type="text" value="0.0"/>	<input type="text" value="0.0"/>	0.0 to 99.9
SP Ramp				
Time Unit	<input type="text" value="EU/min"/>	<input type="text" value="EU/min"/>	<input type="text" value="EU/min"/>	
Set Value °C/min	<input type="text" value="0.0"/>	<input type="text" value="0.0"/>	<input type="text" value="0.0"/>	0.0,0.1 to 999.9
Fall Value °C/min	<input type="text" value="-0.1"/>	<input type="text" value="-0.1"/>	<input type="text" value="-0.1"/>	-0.1,0.0,0.1 to 999.9
Stepwise Disturbance				
Size [%]	<input type="text" value="0.0"/>	<input type="text" value="0.0"/>	<input type="text" value="0.0"/>	-100.0 to 100.0
Start Time [s]	<input type="text" value="0"/>	<input type="text" value="0"/>	<input type="text" value="0"/>	0 to 99999
End Time [s]	<input type="text" value="99999"/>	<input type="text" value="99999"/>	<input type="text" value="99999"/>	0 to 99999
Settling Width °C	<input type="text" value="1.0"/>	<input type="text" value="1.0"/>	<input type="text" value="1.0"/>	0.1 to 100.0
Simple Simulation	<input type="text" value="Disabled"/>	<input type="text" value="Disabled"/>	<input type="text" value="Disabled"/>	
Power Display				
Heater Capacity [W]	<input type="text" value="0"/>	<input type="text" value="0"/>	<input type="text" value="0"/>	0 to 100000
Factor	<input type="text" value="1.0"/>	<input type="text" value="1.0"/>	<input type="text" value="1.0"/>	0.1 to 10.0
Heater Capacity × Factor [W]	<input type="text" value="0.0"/>	<input type="text" value="0.0"/>	<input type="text" value="0.0"/>	



MV Area

Use this area to set limits for the MV. Using limits may slow down the rising portion of the PV waveform and may result in overshooting. The defaults will be the values set on the Settings Tab Page.

SP Ramp Area

You can set an SP ramp to gradually increase and decrease the SP to prevent rapid changes in the PV at the start of a simulation. Set the change width per time unit to set the SP ramp. Set the time unit in the *Time Unit* Box. Set the change width for temperature rise in the *Set Value* (SP Ramp Set Value) Box and the change width for temperature fall in the *Fall Value* (SP Ramp Fall Value) Box. The defaults will be the values set on the Settings Tab Page.

The following settings can be used.

You can set the SP Ramp Set Value or SP Ramp Fall Value parameter to 0 or 0.0 to disable the function.

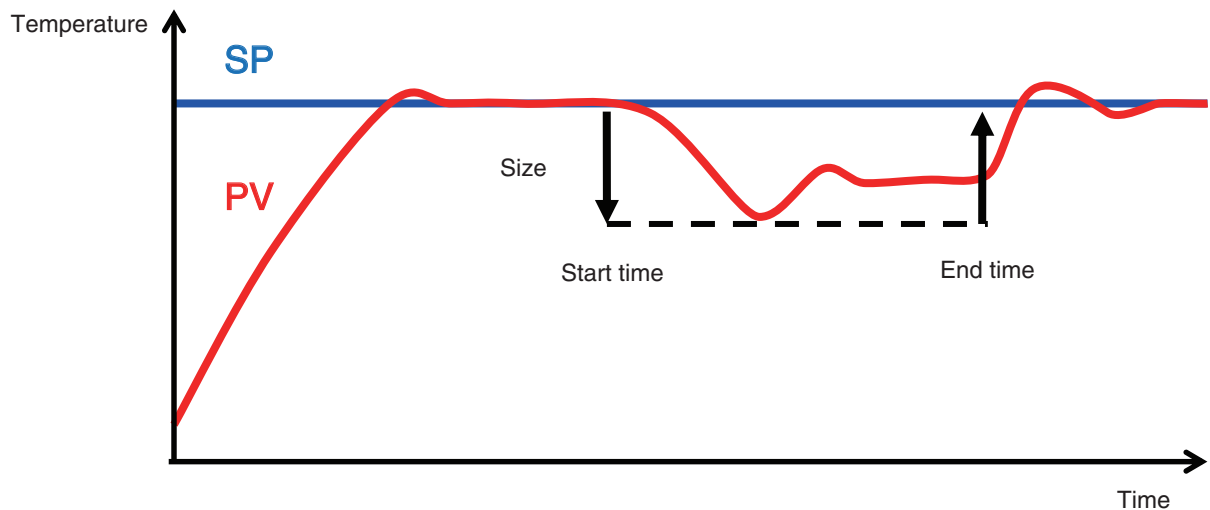
You can set the SP Ramp Fall Value parameter to -1 or -0.1 to use the same set value as the SP Ramp Set Value parameter.

Stepwise Disturbance Area

You can simulate a disturbance in the simulation waveform.

To set the disturbance, set the *Size*, *Start Time*, and *End Time* Boxes. Check the change width in the PV caused by the disturbance before you make the settings.

If you set the end time longer than the simulation waveform, it will act like stepwise disturbance.

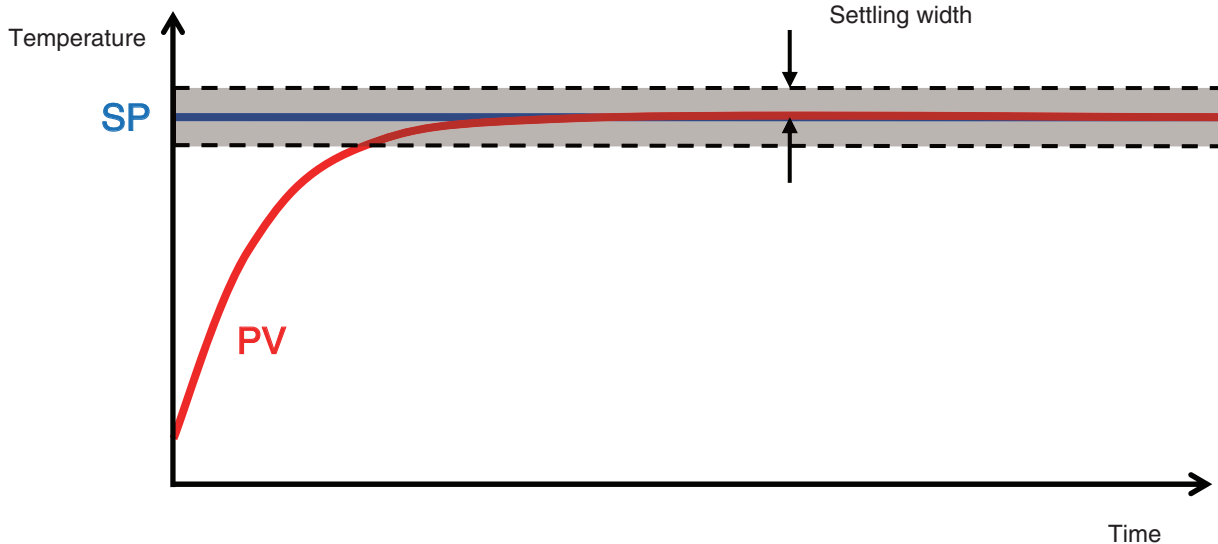


The above figure is merely an illustration. “Size,” “Start time,” and “End time” are not actually displayed on the waveform.



Settling Width

You can set the settling width that is used to calculate the settling time. Refer to 3-4-6 *Checking Waveform Information* (page 3-19) for information on the settling time.



3-4 PID Simulation

3

3-4-9 Changing Simulation Conditions

Simple Simulation

You can use a simple simulation if too much time is required for a normal simulation. The simulation time is reduced by increasing the calculation period used for simulation. This will result in lower accuracy. Select *Enabled* for the Simple Simulation parameter to perform a simple simulation.

Power Display Area

You can display an approximation of the power consumption based on the heater capacity used in temperature control. Use this as a guideline for checking the efficiency of saving energy. If you display the power consumption, enter the heater capacity in the *Heater Capacity* Box. Refer to 3-4-6 *Checking Waveform Information* (page 3-19) for information on the display.

Heater Capacity	Display
0	The calculated MV is displayed.
Any setting except for 0	The power consumption is displayed.

Present Original

Waveform Display

Settling Time [s]	50.6	165.6	101.2
Calculated MV	6346.6	6786.2	6219.0
Overshoot °C	0.9	14.1	0.0



Changing the Heater Capacity for a Simulation

You can change the heater capacity and then perform a simulation. Enter values for the *Heater Capacity* and *Factor* Boxes.

If you do not know the heater capacity, enter 1 for the factor. (The correct power consumption will not be displayed.)

Example: To reduce the heater capacity by half, set the factor to 0.5.

You can confirm the new heater capacity by multiplying the heater capacity by the factor. If you have changed the heater capacity in this way, “The heater capacity is being changed” will be displayed in the message area.

Also, if you have changed the heater capacity in this way, the **Write Settings** Button will be disabled and you will not be able to write the settings. To enable the **Write Settings** Button, set the factor to 1.0.



Precautions for Correct Use

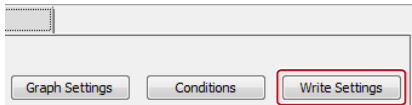
Even if you execute autotuning with the heater capacity factor set to a value other than 1.0, the PID constants will be calculated with a factor of 1.0.

Refer to *3-4-2 Executing Autotuning (AT)* (page 3-15) for information on autotuning.

3-4-10 Writing the Simulation Results to the Temperature Controller

Connect the Temperature Controller to the computer with a USB-Serial Conversion Cable.

Click the **Write Settings** Button to write the adjusted set values to the Temperature Controller.



The following present values, indicated in the following figure, will be written.

- Proportional band, integral time, derivative time, and alpha
- MV upper limit and MV lower limit
- SP ramp time unit, SP ramp set value, and SP ramp fall value*

* The value of the *Set Value* parameter is written for the SP Ramp Set Value parameter and the value of the *Fall Value* parameter is written for the the SP Ramp Fall Value parameter.

	Present	Record
Setting Time [s]	50.6	165.6
Calculated MV	6346.6	6786.2
Overshoot °C	0.9	14.1
Starting SP °C	0.0	0.0
SP °C	100.0	100.0
SP Change Time [s]	0	0
Proportional Band	0.1	2.1
Integral Time	0	9.9
Derivative Time	0	0.99
Alpha	0.0	1.00
MV	13.2	2.1
Upper Limit %	58	7
Lower Limit %	10	1
Time Unit	0.00	0.65

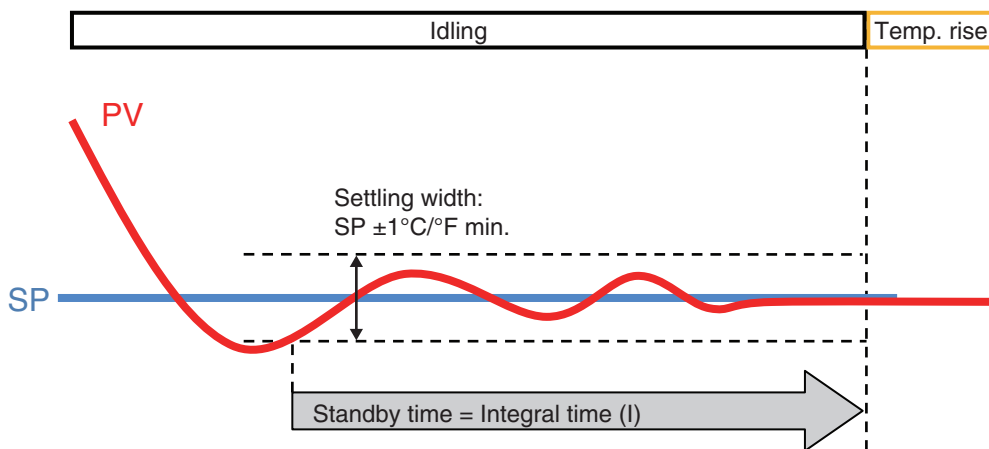
Conditions	Present
MV	13.2
Upper Limit %	58
Lower Limit %	10
Time Unit	EU/min
Set Value °C/min	0.0
Fall Value °C/min	-0.1

4 Appendix

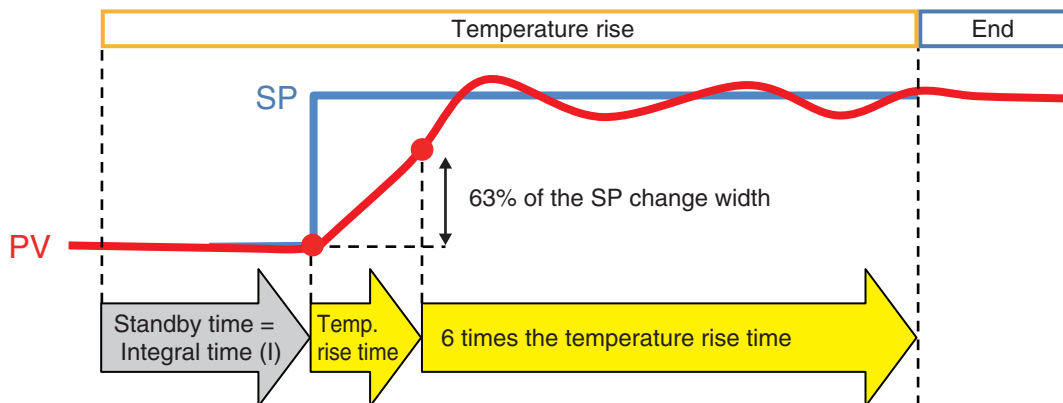
Phase Changes during Log Data Collection

The conditions for moving between the idling, temperature rise, and end phases that are described in *3-2-1 Collecting Log Data* (page 3-6) are as follows:

- Condition for Moving from Autotuning to Idling
The idling phase is entered when autotuning is completed normally or after autotuning has been performed for 20,000 s.
- Condition for Moving from Idling to Temperature Rise
The temperature rise phase is entered if the PV does not exceed the settling width during the standby time, as shown in the following figure.



- Condition for Moving from Temperature Rise to End
The end phase is entered when seven times the temperature rise time plus the standby time has elapsed, as shown in the following figure.



Index

A

allowable value 3-12
applicable controllers 1-1
autotuning 4-1
average deviation 3-10, 3-12

C

Calculated MV 3-19
Conditions Button 3-21
controlled devices 1-2

D

deviation 3-10

E

end phases 4-1
error message 3-11

F

Factor 3-24
Fall Value 3-22

G

graph scales 3-9, 3-12, 3-19

H

Heater Capacity 3-23, 3-24

I

idling 4-1

M

model 3-10
multiplying the heater capacity by the factor 3-24
MV 3-22

O

Original label 3-18
Overshoot 3-19

P

power consumption 3-23
PVM 3-10

R

Record Button 3-18

S

set point 3-17
Set Value 3-22
Settling Time 3-19
settling time 3-23
settling width 3-23
simple simulation 3-23
SP change time 3-17
SP ramp 3-22
starting SP 3-17
stepwise disturbance 3-22
system requirements 1-1

T

Temperature Controller settings 1-1
temperature rise 4-1
Time Unit 3-22

OMRON Corporation Industrial Automation Company
Kyoto, JAPAN

Contact: www.ia.omron.com

Regional Headquarters

OMRON EUROPE B.V.

Wegalaan 67-69, 2132 JD Hoofddorp
The Netherlands
Tel: (31)2356-81-300/Fax: (31)2356-81-388

OMRON ASIA PACIFIC PTE. LTD.

No. 438A Alexandra Road # 05-05/08 (Lobby 2),
Alexandra Technopark,
Singapore 119967
Tel: (65) 6835-3011/Fax: (65) 6835-2711

OMRON ELECTRONICS LLC

2895 Greenspoint Parkway, Suite 200
Hoffman Estates, IL 60169 U.S.A.
Tel: (1) 847-843-7900/Fax: (1) 847-843-7787

OMRON (CHINA) CO., LTD.

Room 2211, Bank of China Tower,
200 Yin Cheng Zhong Road,
PuDong New Area, Shanghai, 200120, China
Tel: (86) 21-5037-2222/Fax: (86) 21-5037-2200

Authorized Distributor:

© OMRON Corporation 2014-2019 All Rights Reserved.
In the interest of product improvement,
specifications are subject to change without notice.

Cat. No. H190-E1-02

0719