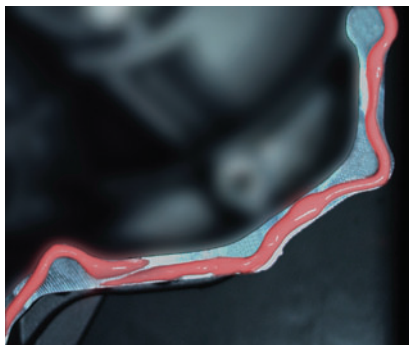


Vision sensor software for Glue Bead Inspection Model FZ3-UGI/UGIH

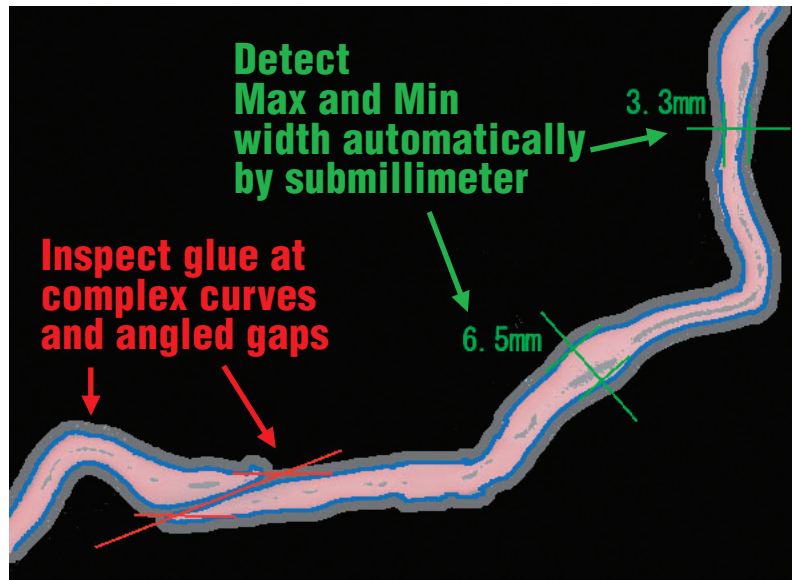
Accurate calculation with any path, any environment

High accurate inspection of the complex path



Original image

Omron original

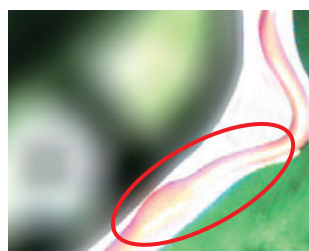


With Omron's original automatic outline scanning technology, automatically calculated glue width and detected angled gaps even complex curved path. Logging the data of glue condition, utilizing for quality control and traceability.

Identify glue independent of environmental change

Inspection troubles by glare, changes in lighting condition, and variations in metal workpieces are resolved by powerful image processing technology (HDR = high dynamic range processing). Responding to changes in lighting and surface, the technology delivers high detecting accuracy.

Patent pending



Previous process

Cannot detect the glue path at the glared area.

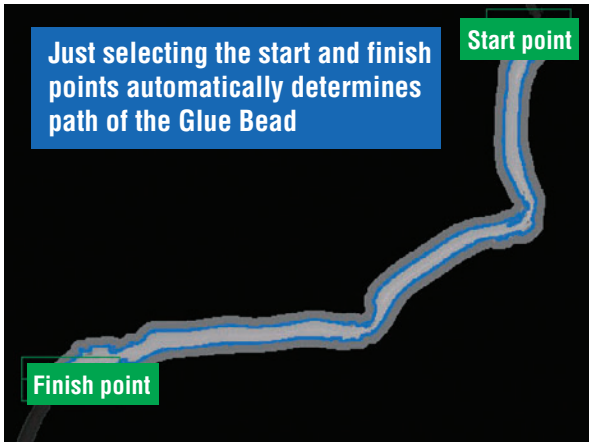


HDR process

Can reliably detect the glue path by eliminating the effects of glare.

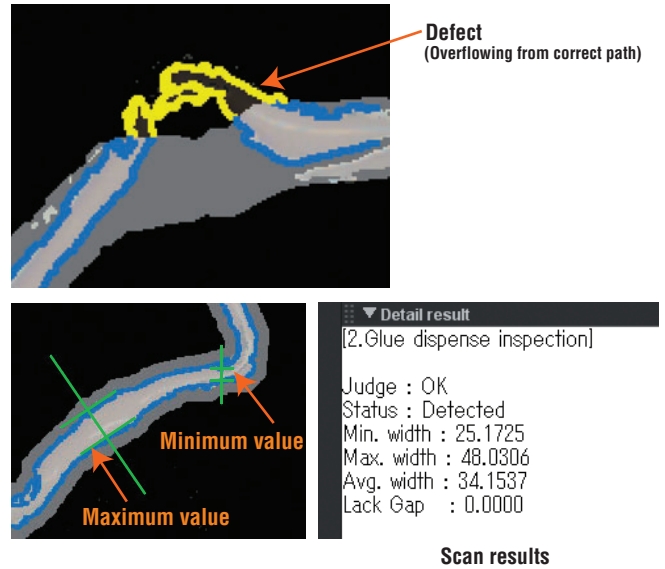
Detects complex paths with Easy set-up

Define the glue path outline simply by defining the start and finish point on the screen. No expert knowledge is required.



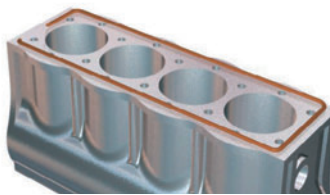
Visible results enable quick error analysis

Graphical scan image is shown on-screen, allowing immediate analysis and quick correction of errors.



Scan results

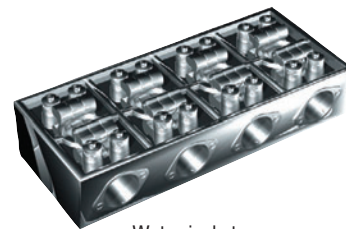
Examples of application



Cylinder head



Door panel



Water jacket

Rating, performance and specification

	item	model	Description(Supported controllers)
Vision sensor software for Glue Bead Inspection	For high grade controllers	FZ3-UGIH	FZ4-H11□□/H7□□/H6□□/H11□□-10/H7□□-10/H6□□-10
	For high speed and standard controllers	FZ3-UGI	FZ4-11□□/7□□/6□□/11□□-10/7□□-10/6□□-10

OMRON Corporation
 Industrial Automation Company
 Sensing Devices Division H.Q.
 Application Sensors Division
 Shiokoji Horikawa, Shimogyo-ku,
 Kyoto, 600-8530 Japan
 Tel: (81) 75-344-7068/Fax: (81) 75-344-7107

Regional Headquarters
OMRON EUROPE B.V.
 Sensor Business Unit
 Carl-Benz-Str. 4, D-71154 Nufringen,
 Germany
 Tel: (49) 7032-811-0/Fax: (49) 7032-811-199

OMRON ELECTRONICS LLC
 One Commerce Drive Schaumburg,
 IL 60173-5302 U.S.A.
 Tel: (1) 847-843-7900/Fax: (1) 847-843-7787

OMRON ASIA PACIFIC PTE. LTD.
 No. 438A Alexandra Road # 05-05/08 (Lobby 2),
 Alexandra Technopark, Singapore 119967
 Tel: (65) 6835-3011/Fax: (65) 6835-2711

OMRON (CHINA) CO., LTD.
 Room 2211, Bank of China Tower,
 200 Yin Cheng Zhong Road,
 PuDong New Area, Shanghai, 200120, China
 Tel: (86) 21-5037-2222/Fax: (86) 21-5037-2200

Authorized Distributor:

In the interest of product improvement,
 specifications are subject to change without notice.

CSM_1_2_0313
 Cat. No. Q172-E1-01

Printed in Japan
 1009-Z(1009) (KW)